

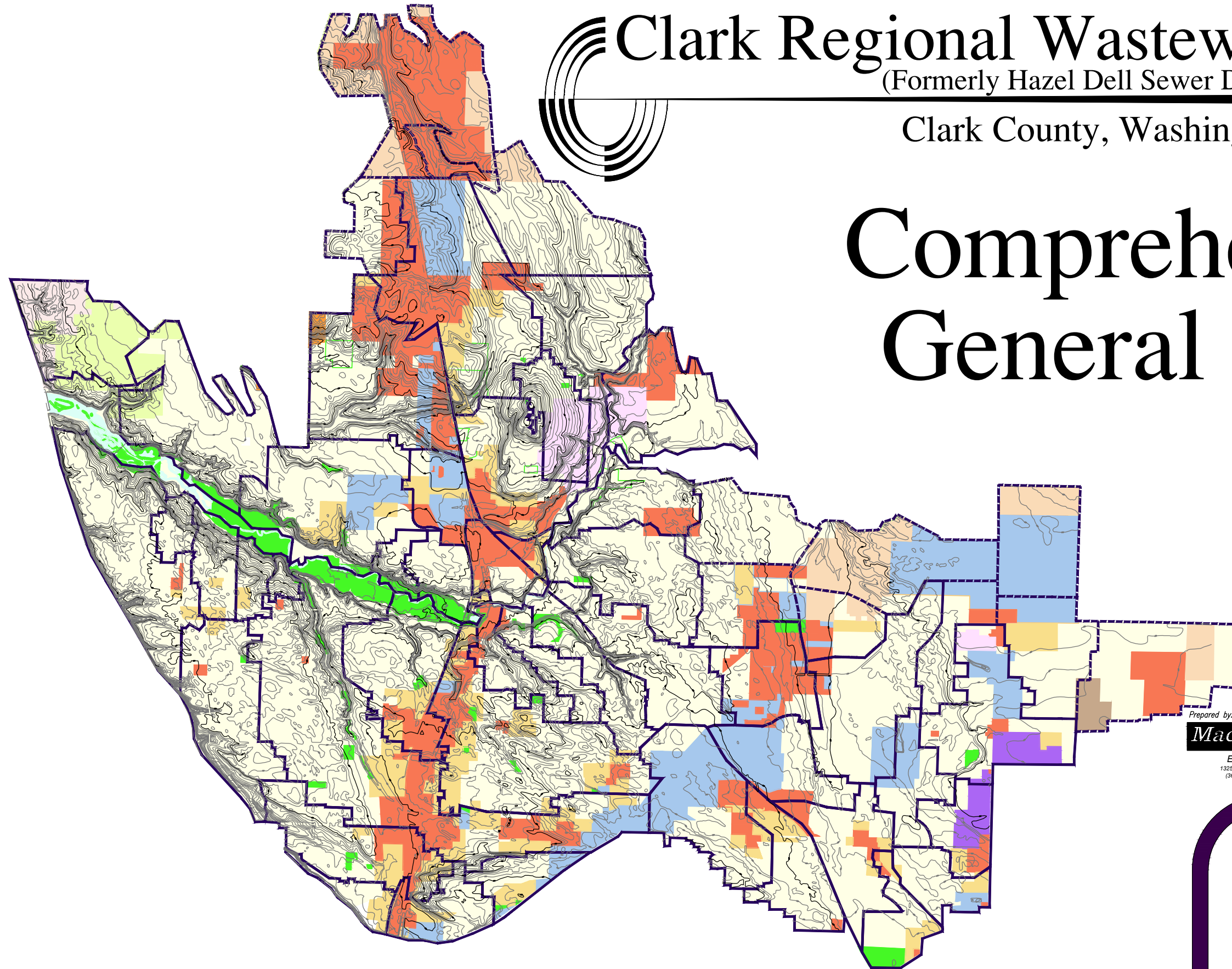
# Clark Regional Wastewater District

(Formerly Hazel Dell Sewer District)

Clark County, Washington

# Comprehensive General Sewer Plan

## Amendment



**Kennedy/Jenks Consultants**

Prepared by:

**MacKay & Sposito, Inc.**



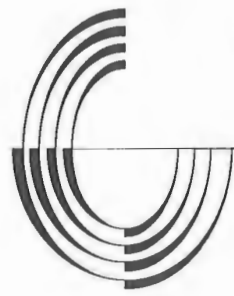
ENGINEERS SURVEYORS PLANNERS  
1325 SE TECH CENTER DRIVE, SUITE 140 VANCOUVER, WA 98663  
(360) 695-3411 (503) 289-0726 (866) 695-3411 FAX (360) 695-0833

www.mackaysposito.com



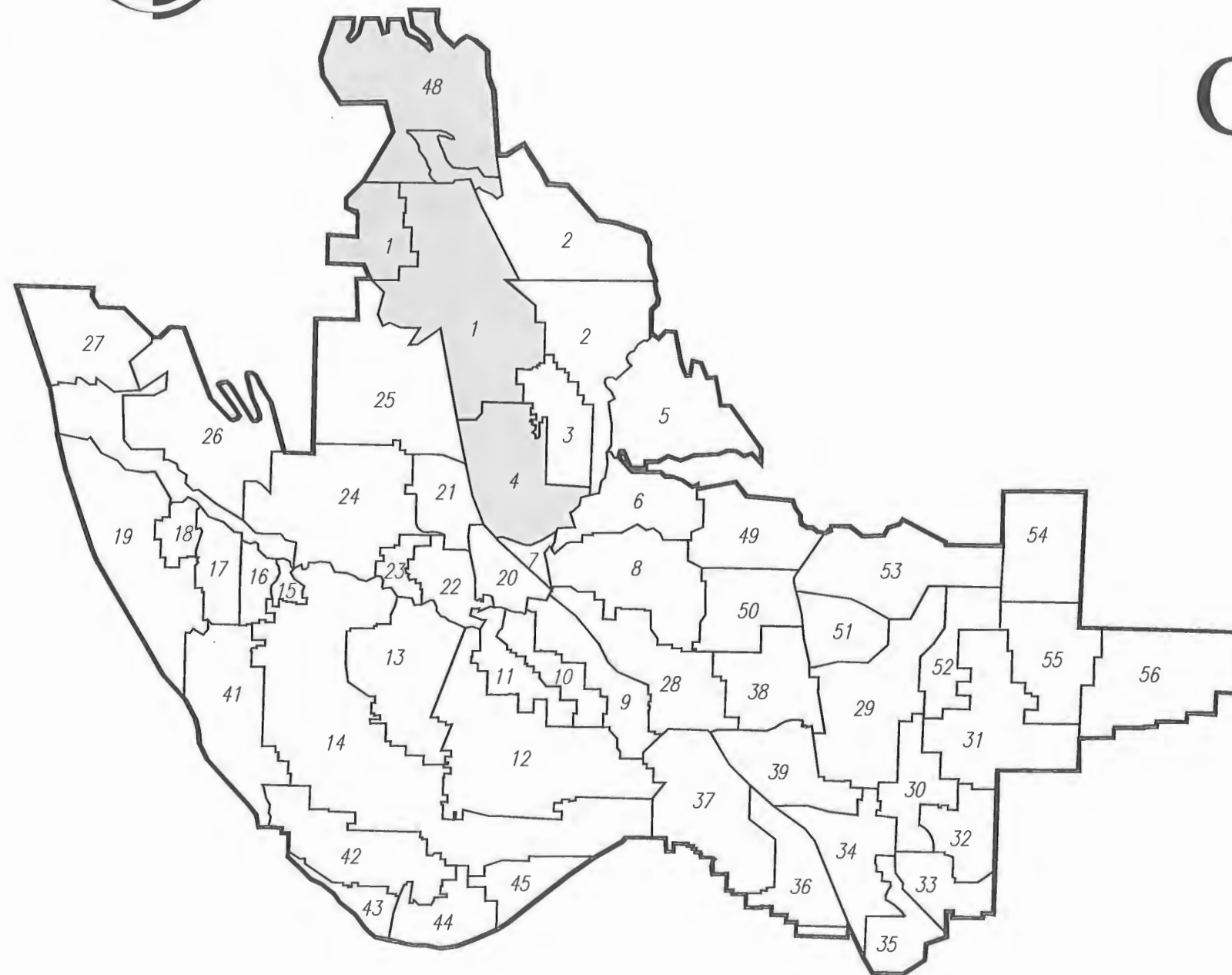
# FINAL

REVISED SHEET (MAR 2013)



# Clark Regional Wastewater District

Clark County, Washington



## Comprehensive General Sewer Plan Amendment



**Kennedy/Jenks Consultants**

Prepared by:

**MacKay & Sposito, Inc.**



ENGINEERS SURVEYORS PLANNERS  
1325 SE TECH CENTER DRIVE, SUITE 140 VANCOUVER, WA 98683  
(360) 695-3411 (503) 289-6726 (888) 695-3411 FAX (360) 695-0833

www.mackaysposito.com

REVISED SHEET (MAR 2013)

# CLARK REGIONAL WASTEWATER DISTRICT COMPREHENSIVE GENERAL SEWER PLAN AMENDMENT

## TABLE OF CONTENTS

List of Abbreviations

### **I. INTRODUCTION**

- A. GENERAL – NOT UPDATED**
- B. PURPOSE**
- C. SCOPE**
- D. GROWTH – NOT UPDATED**

### **II. NOT UPDATED**

### **III. CAPITAL FACILITIES PLAN**

- A. GENERAL – NOT UPDATED**
- B. GROWTH MANAGEMENT ACT (GMA) – NOT UPDATED**
- C. EXTENSION POLICY – NOT UPDATED**
- D. EXECUTIVE SUMMARY**
  - 1. Population Growth
    - a. Summary
  - 2. Projected Sanitary Sewer Flow
    - a. Summary
  - 3. Design Criteria/Methodology
    - g. DCWTS Flow Projections
  - 4. Capital Facilities Improvements
    - a. Summary

### **IV. NOT UPDATED**

### **V. INDIVIDUAL WASTEWATER BASIN SUMMARIES**

- A. WASTEWATER BASIN TRIBUTARY TO THE SALMON CREEK WASTEWATER TREATMENT PLANT**
  - 1. Whipple Creek East
  - 4. I-5 North
  - 48. I-5 Corridor

### **VI. ENVIRONMETAL**

- A. ENVIRONMENTAL CHECKLIST (SEPA)**

### **VII. NOT UPDATED**

**REVISED SHEET (MAR 2013)**

## LIST OF ABBREVIATIONS

CFP	Capital Facilities Plan	gpcd	gallons per capita per day	sec	second(s)
CFS	Cubic Feet per Second	gpd	gallons per day	SEPA	State Environmental Policy Act
CPU	Clark Public Utilities	gpm	gallons per minute	SIU	Significant Industrial Users
CRWWD	Clark Regional Wastewater District	hr	hour(s)	SPR	site plan review
CUP	Conditional Use Permit	I/I	infiltration and inflow	SWD	side water depth
cy	cubic yards	LOS	level of service	TAZ	Transportation Analysis Zone
d	day	MG	million gallons	TDH	total dynamic head
DCWTS	Discovery Corridor Wastewater Transmission System	mgd	million gallons per day	TMDLs	total maximum daily loads
District	Clark Regional Wastewater District	MMF	maximum month flow	TYP	typical
DNS	Determination of Nonsignificance	MOVS	Mechanically Operated Valve Station	UGA	Urban Growth Area
DOE	Department of Ecology	MPWRF	Marine Park Water Reclamation Facility	UGB	Urban Growth Boundary
DOH	Department of Health	NGVD	national geodetic vertical datum	ULID	Utility Local Improvement District
DWADF	dry weather average daily flow	NPDES	National Pollutant Discharge Elimination System	USGS	U.S. Geological Survey
Ecology	Department of Ecology (Washington State)	O&M	operations and maintenance	VWWTP	Vancouver Westside Wastewater Treatment Plant
EPA	U.S. Environmental Protection Agency	OFM	Office of Financial Management	WAC	Washington Administrative Code
ERU	equivalent residential unit	P.S.	Pump Station	WWTP	Wastewater Treatment Plant
ERUs	equivalent residential units	PF	peak flow	YR	year
Ex.	Existing	POTW	publicly owned treatment works		
F.M.	Force Main	Prop.	Proposed		
FOG	fats, oils, and grease	PWTF	Public Works Trust Fund		
Ft <sup>2</sup>	square feet	RCW	Revised Code of Washington		
Ft <sup>3</sup>	cubic feet	S.T.E.G.	Septic Tank Effluent Gravity		
gal	gallon	S.T.E.P.	Septic Tank Effluent Pump		
GFC	General Facility Charge	scfm	standard cubic feet per minute		
GMA	Growth Management Act	SCWWTP/SCTP	Salmon Creek Wastewater Treatment Plant		
gpad	gallons per acre per day	SDC	system development charge		

## I. Introduction

REVISED SHEET (MAR 2013)

# CLARK REGIONAL WASTEWATER DISTRICT COMPREHENSIVE GENERAL SEWER PLAN 2012 AMENDMENT

## I. INTRODUCTION

### A. GENERAL – NOT UPDATED

### B. PURPOSE

Through the early 2000s, Clark County experienced rapid population growth. Plans to support future development included significant growth in the City of Ridgefield, which has developable industrial property near I-5 along with ample residential and commercial property. Ridgefield's existing wastewater treatment plant has a rated capacity of 0.7 mgd and discharges to Lake River. In order to grow beyond a capacity of 1.0 mgd, the Washington Department of Ecology (Ecology) will require the City to develop a new outfall to the Columbia River.

In 2007, discussion began with cities and counties in Clark County to determine how existing and planned infrastructure can best be used to benefit sewer customers in the county. The study determined that the most cost-effective alternative for providing the capacity required to support growth in Ridgefield was to convey flow to the Salmon Creek Treatment Plant for treatment and discharge.

To achieve this, flow from the City of Ridgefield will be pumped from the City of Ridgefield south along the I-5 corridor to the Gee Creek rest area, located in the northernmost basin in the District's service area. Flow will be conveyed through existing and planned infrastructure in the Clark Regional Wastewater District's collection system into the Salmon Creek Wastewater Management System (SCWMS). Conveyance improvements required to serve Ridgefield are collectively described as the Discovery Corridor Wastewater Transmission System (DCWTS). Infrastructure planned as part of the 2006 Comprehensive Plan Amendment provides the backbone system required to convey flows from Ridgefield through the District's service area to the SCWMS; however, the sizing of system elements must be adjusted to accommodate current and projected flows from Ridgefield.

This General Sewer Plan amendment has been prepared to reflect changes required to planned upgrades in the District's conveyance system to provide sufficient capacity for flows from local basins and from the City of Ridgefield.

## C. SCOPE

The scope for this Comprehensive General Plan Amendment is to provide a plan for the District that complies with Title 173-240-050 WAC and Title 57 RCW, and is a useful tool for the management and staff of the District.

The 2001 Comprehensive Sewer Plan was amended in June 2006 based on new Urban Growth Boundaries, revised population projections, and planning horizon changes. In order to accommodate the upgrades to the District's existing wastewater system as a result of the new DCWTS, some of the basins in the June 2006 Plan have been revised in 2013. These revisions are documented in this 2013 Amendment. The Comprehensive Sewer Plan - 2013 Amendment is not a stand alone document, but rather a supplement to the original 2001 Comprehensive Plan and the June 2006 Comprehensive Sewer Plan Amendment. The following symbol has been placed in the lower right corner of each page in the amendment to designate that a revision has been made to that sheet:

**REVISED SHEET (MAR 2013)**

Revised sheets reflect revised capital facility improvements, revised text, or other updates to the corresponding 2006 Comprehensive Sewer Plan Amendment page. Revised sheets update the information shown in corresponding 2006 Comprehensive Sewer Plan Amendment and supersede the 2006 Comprehensive Sewer Plan Amendment.

## D. GROWTH – NOT UPDATED

**REVISED SHEET (MAR 2013)**

### III. Capital Facilities Plan

REVISED SHEET (MAR 2013)

### III. CAPITAL FACILITIES PLAN

#### A. GENERAL – NOT UPDATED

#### B. GROWTH MANAGEMENT ACT (GMA) – NOT UPDATED

#### C. EXTENSION POLICY – NOT UPDATED

#### D. EXECUTIVE SUMMARY

##### 1. Population Growth

###### a. Summary

Service area-wide population projections were evaluated as part of the 2006 Plan Amendment. These projections were based on Clark County’s residential growth projections by Transportation Analysis Zone (TAZ), as well as commercial and industrial growth determined based on areas zoned for those land uses and included on the County’s Vacant Land Inventory Map.

No changes to overall population projections were made as part of the 2012 Plan Amendment. For purposes of determining the required size for conveyance infrastructure serving both Ridgefield and District customers, current and buildout Equivalent Residential Units (ERUs) in Basins 01, 04, and 48 were evaluated using Clark County’s Vacant Buildable Lands Model (VBLM).

##### 2. Projected Sanitary Sewer Flow

###### a. Summary

Flow projections were developed for the District’s planning period for the area tributary to the DCWTS projects and ensure capacity is provided for the flows anticipated in the District’s service area. Projections were developed by the District using a GIS program that uses zoning and other land use information to estimate the number of ERUs from properties within a basin or subbasin. Six separate subbasins were delineated as being tributary to the DCWTS within the District’s existing and future service area and are shown in Figure 1. These six basins were delineated based upon locations where flows needed to be estimated for sizing DCWTS components. Table 1 provides a description of each area.

**Table 1. CRWWD Service Area Descriptions**

Area	Description
Area A	This area is within the Urban Reserve and is included in the District’s Basin 48. This area is tributary to the new 209 <sup>th</sup> Street pump station to be constructed in the Gee Creek rest area.
Area B	Area B is on the west side of Interstate-5 and is currently tributary to the Fairgrounds Pump Station. This pump station is to be decommissioned, and flows from this station will be conveyed in the Whipple Creek Trunk Sewer to the 15 <sup>th</sup> Avenue Pump Station.

Area	Description
Area C	Area C is tributary to the Whipple Creek Trunk Sewer at the intersection of NE 179 <sup>th</sup> Street and NE 10 <sup>th</sup> Avenue.
Area D	Area D is a small area of developable properties that will discharge directly to the Whipple Creek Trunk Sewer at the access road to the Whipple Creek North Pump Station.
Area E	Area E is tributary to the Whipple Creek North Pump Station.
Area F	Area F is tributary to the Legacy Pump Station

Existing and future ERUs were estimated for each area using the District’s records (for existing) and the County’s Vacant Buildable Lands Model to predict future ERUs. Flows were projected by applying unit flow rates of 250 gallons per ERU (annual average) to residential units, 1,200 gallons per day per acre for commercial property, and 1,800 gallons per acre per day for industrial property.

The resulting ERU and flow estimates are summarized on the individual wastewater basin summaries in Section V.

##### 3. Design Criteria/Methodology

###### a-f – Not Updated

###### g. DCWTS Flow Projections

City of Ridgefield’s sewer planning documents list their planning period from 2008 through 2028, and the maximum month flow rate projected in 2028 is 4.76 mgd. Based on recent economic conditions and slower than anticipated growth, it is unlikely that this flow will be generated by 2028. However, as required by the Washington Department of Ecology, the DCWTS provides capacity to convey this flow, and a plan has been developed to treat up to this flow rate at the Salmon Creek Treatment Plant.

The District’s 2006 Amendment to the Comprehensive General Sewer Plan lists its planning period from 2006 through 2026. The DCWTS collects flows from Basins 48, 01, and 04, and the year 2026 flow projections from these basins were accommodated in the DCWTS. Flow projections for these three basins were estimated based on the number of ERUs projected using the County’s Vacant Buildable Lands Model. Table 2 lists the maximum month flows at the end of each jurisdiction’s service area. These flows were used for sizing DCWTS components.

**Table 2. Flow Projections**

Service Area	MM Flow (mgd)
City of Ridgefield	4.76
CRWWD	2.92
Total to SCWMS	7.68



#### 4. Capital Facilities Improvements

##### a. Summary

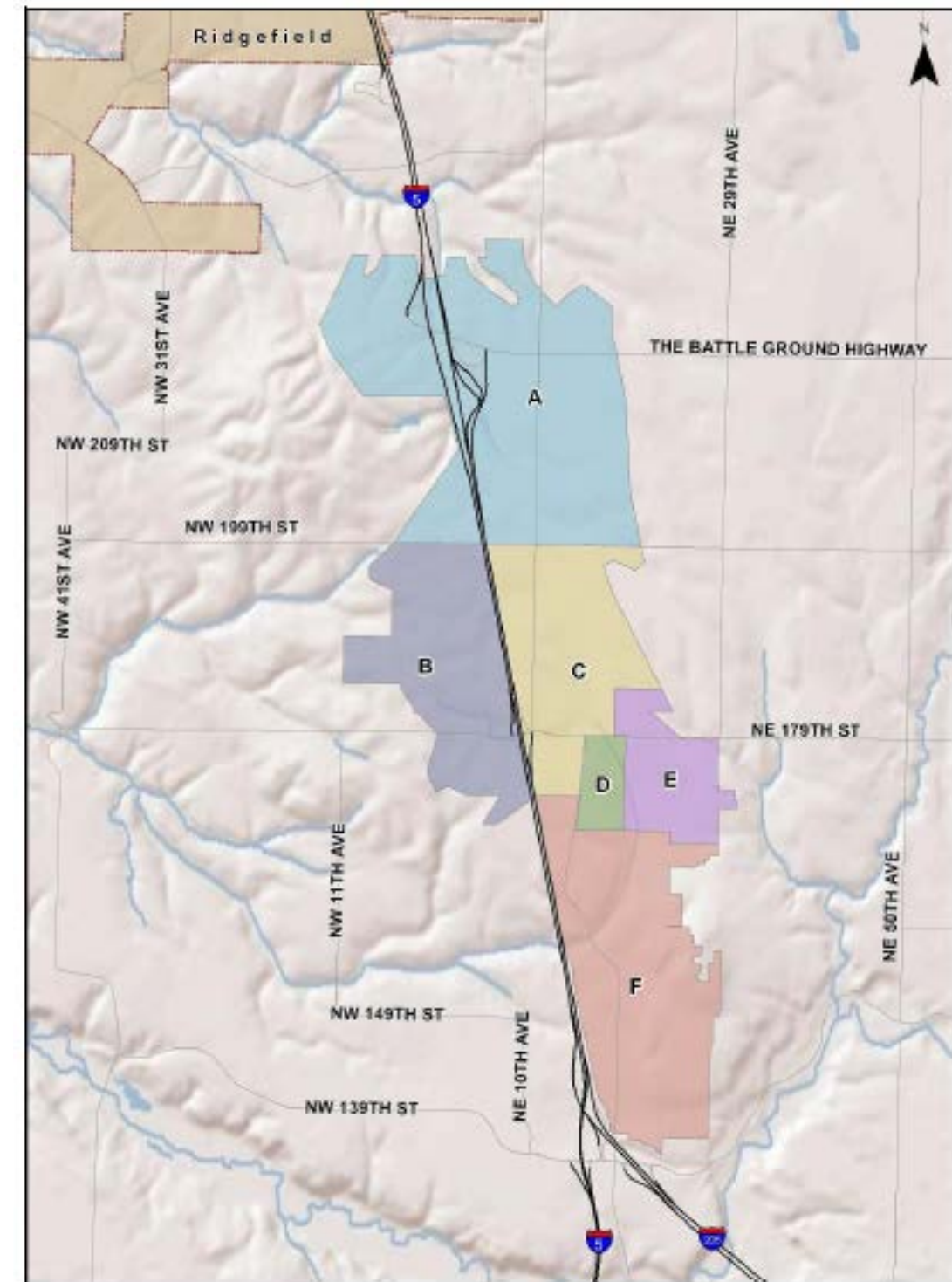
Based on the projected flows from the District's service area and the Ridgefield UGA, improvements will be required in Basins 01, 04, and 48. Improvements within the District are shown with the individual basin summaries in Section V.

Estimated costs were prepared for the improvements within each basin. The unit costs for all estimates in this plan are based on 2011 estimated prices for the projected improvements. Where appropriate, capital improvements have been phased to minimize ratepayer impacts and match infrastructure capacity with anticipated flows.

The capital improvements have been developed to serve projected growth through the planning horizon; however, given the current economic conditions and uncertainty in projecting future development rates, the timing of the improvements is uncertain. Rather than projecting capital improvements by year, flow triggers are provided for each project. These flow triggers will allow the District to adjust the implementation schedule for projects based on actual need. To aid in planning for future design and construction efforts, Table 3 also shows the anticipated timeframe in which capacity is needed.

Total capital improvement costs and flow triggers are shown in Table 3 on the following page. The capacities mentioned as flow trigger in Table 3 reflect actual capacity limitations. The trigger for some projections is based on the DCWTS construction.

Figure 1. DCWTS Tributary Basins



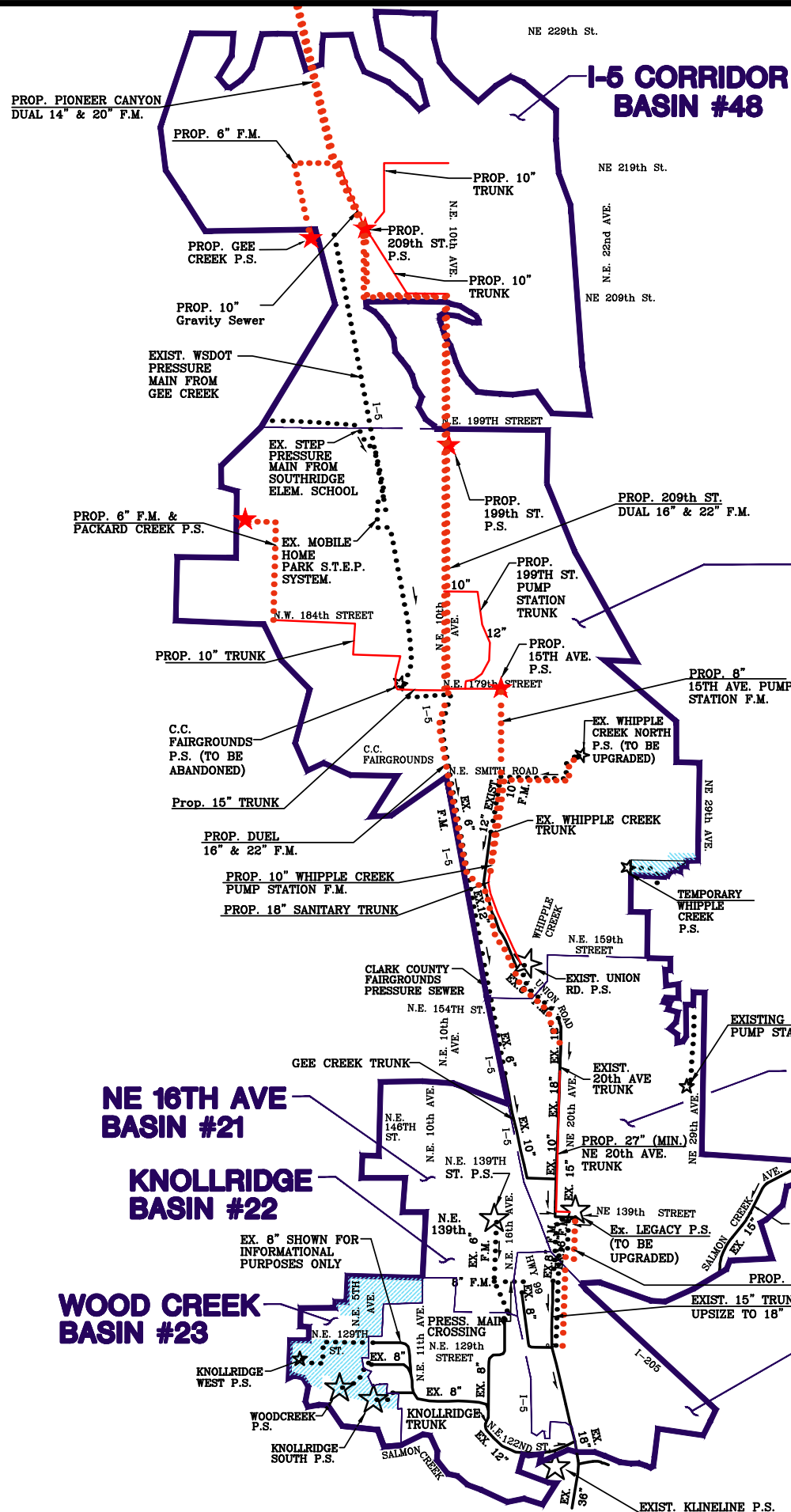
**Table 3. Total Capital Improvement Costs for Basins 1, 4, and 48**

<b>Basin/Project</b>	<b>Cost</b>	<b>Trigger<sup>1</sup></b>	<b>Anticipated Construction</b>
<b>01 - Whipple Creek East</b>			
199 <sup>th</sup> Street Pump Station and Discharge	\$1,909,000	Initial basin development	2014-2019
199 <sup>th</sup> Street Pump Station Trunk Sewer	\$511,000	Initial basin development	2014-2019
Whipple Creek Trunk Sewer	\$745,000	Development south of NE 179 <sup>th</sup> and west of NE 15 <sup>th</sup> Avenue	2014-2019
15 <sup>th</sup> Avenue Pump Station and Discharge	\$1,596,000	Whipple Creek Trunk Sewer Expansion	2014-2019
Whipple Creek North Pump Station Force Main Upgrade	\$672,000	Existing force main capacity	2024
15 <sup>th</sup> Avenue Trunk	\$1,060,000	Existing system capacity	2024
Union Road Pump Station Force Main Upgrade	\$358,000	Existing force main capacity	2018
Packard Creek Pump Station and Discharge	\$3,530,000	Initial basin development	2018-2023
<b>04 – I-5 North</b>			
Legacy Pump Station Upgrade	\$1,000,000 \$340,000	1.84 MGD; 2.9 MGD	2013-2018; 2023-2028
20 <sup>th</sup> Avenue Trunk Sewer Upgrade	\$855,000 \$2,423,000	0.9 MGD 1.8 MGD	2013-2018 2018-2023
<b>48 – I-5 Corridor</b>			
NE 209 <sup>th</sup> Street Pump Station	\$3,748,000 \$358,000 \$584,000	DCWTS Construction 1.4 MGD system flow 5.0 MGD system flow	2016; 2018-2023 2023-2028
209 <sup>th</sup> Street Pump Station Force Main	\$9,939,000 \$7,676,000	DCWTS Construction 2.2 MGD system flow	2016; 2023-2028
219 <sup>th</sup> Street Trunk	\$241,000	Initial basin development	2018-2023
209 <sup>th</sup> Street Trunk	\$343,000	Initial basin development	2018-2023
Gee Creek Pump Station Improvements	\$1,105,000	Initial basin development	2016

1. Flows are expressed as maximum month

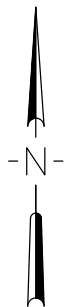
## V. Individual Wastewater Basin Summaries

REVISED SHEET (MAR 2013)



**WHIPPLE CREEK  
EAST BASIN #1**

**I-5 NORTH  
BASIN #4**



**LEGEND**

- Sub-Area Boundary
- Basin Boundary
- Existing Trunk Sewer
- Proposed Trunk Sewer
- Proposed Force Main
- Existing Force Main
- Existing Temporary Pump Station
- Existing Pump Station
- Proposed Pump Station

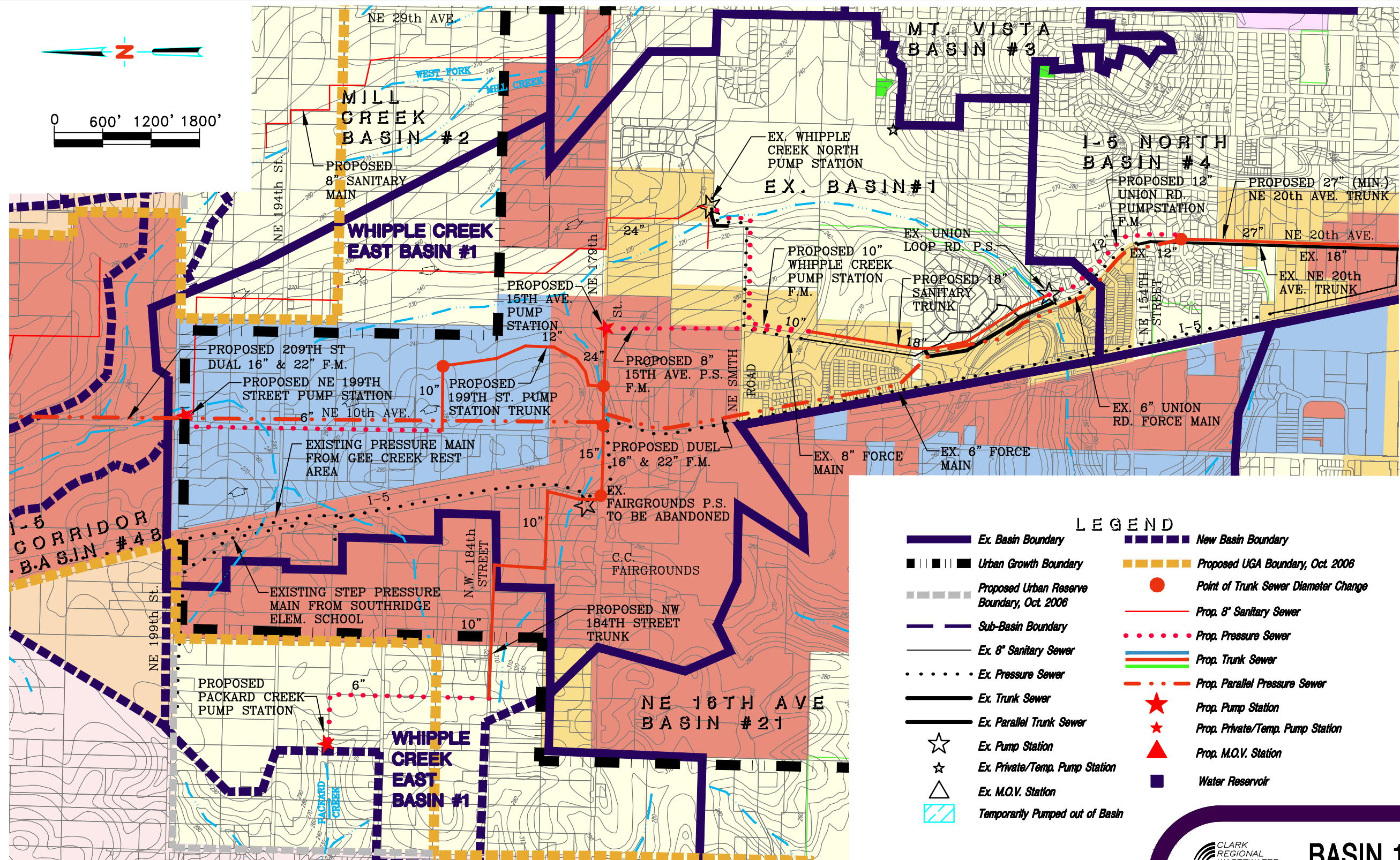
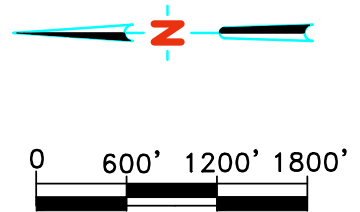
**Kennedy/Jenks Consultants**

**MacKay & Sposito, Inc.**  
ENGINEERS SURVEYORS PLANNERS  
1325 SE TECH CENTER DRIVE, SUITE 140 VANCOUVER, WA 98683  
(360) 695-3411 (503) 289-6726 (888) 695-3411 FAX (360) 695-0833  
[www.mackaysposito.com](http://www.mackaysposito.com)



**INTERSTATE-5  
NORTH  
SUBAREA**

**REVISED SHEET (MAR 2013)**



- LEGEND**
- Ex. Basin Boundary
  - New Basin Boundary
  - Proposed UGA Boundary, Oct. 2006
  - Point of Trunk Sewer Diameter Change
  - Urban Growth Boundary
  - Prop. 8" Sanitary Sewer
  - Proposed Urban Reserve Boundary, Oct. 2006
  - Sub-Basin Boundary
  - Prop. Pressure Sewer
  - Ex. 8" Sanitary Sewer
  - Prop. Trunk Sewer
  - Ex. Pressure Sewer
  - Prop. Parallel Pressure Sewer
  - Ex. Trunk Sewer
  - Prop. Pump Station
  - Ex. Parallel Trunk Sewer
  - Prop. Private/Temp. Pump Station
  - Ex. Pump Station
  - Prop. M.O.V. Station
  - Ex. Private/Temp. Pump Station
  - Ex. M.O.V. Station
  - Water Reservoir
  - Temporarily Pumped out of Basin

AG-20	CF	MH	RURAL 5	RURAL 10, RURAL 20	UNDESIGNATED ZONING
University	OC	R1-5, R1-6, R1-7.5, R1-10, R1-20	Parks Wildlife	UR-10	
C-2, C-3, CH, CH-12, CL	BP, ML	R-12, R-18, R-22, R-30, R-43, OR-43	Water	UR-20	

**Kennedy/Jenks Consultants**

Prepared by:

**MacKay & Sposito, Inc.**

ENGINEERS SURVEYORS PLANNERS  
 1325 SE TECH CENTER DRIVE, SUITE 140 VANCOUVER, WA 98683  
 (360) 695-3411 (303) 269-6726 (866) 695-3411 FAX (360) 695-0833  
 www.mackaysposito.com

CLARK REGIONAL WASTEWATER DISTRICT

**BASIN 1  
WHIPPLE CREEK  
EAST**

**REVISED SHEET (MAR 2013)**



**TRIBUTARY TREATMENT PLANT:**  
**SALMON CREEK (SCWWTP)**  
**TOTAL AREA 1547 AC**

**BASIN DESCRIPTION:**

Whipple Creek East basin is located between NE 199<sup>th</sup> Street and NE 159<sup>th</sup> Street, from NW 11<sup>th</sup> Avenue to NE 29<sup>th</sup> Avenue; and includes the Clark County Fairgrounds area from NE 184<sup>th</sup> Street to NE 174<sup>th</sup> Street and from NW 2<sup>nd</sup> Avenue to Interstate-5.

**GENERAL BASIN INFORMATION:**

The Whipple Creek East basin has the potential to be a fast growing basin with a large undeveloped commercial and industrial area around the NE 179<sup>th</sup> Street interchange as well as large undeveloped residential areas east of the freeway. Clark County estimates a moderate residential growth rate of 6.4% and job growth of 10.2%. Key infrastructure in this basin will convey local flows from the District's service area. In addition, dual force mains from the new 209<sup>th</sup> Street Pump Station in Basin 48 will convey flows through this basin along NE 10<sup>th</sup> Avenue and Union Road to the 20<sup>th</sup> Avenue Trunk in Basin 04. Due to rolling terrain and creeks in the northern portions of the basin, alternate (grinder) systems may be required to provide sanitary service to these areas. One new pump station is proposed in the northern portion of this basin. It is anticipated that based on the proposed improvements, the District will be able to serve areas adjacent to this basin.

**BASIN GROWTH TABLE:**

Item	Year 1997	Year 2006	Year 2012	Year 2018	Year 2026	Ultimate
Population	702	1162	1621	2539	5783	9027
E.R.U.s	289	478	667	1045	2380	3715
Peak Flow (MGD)	0.18	0.30	0.42	0.65	1.49	2.32

**Note:** The population, E.R.U.s, and Peak Flow represent the status of the basin at the end of the year shown. The capital improvements shown are the sum of the proposed improvements for the years prior to and including the year shown. Flow and ERU projections are based on projections in the City of Ridgefield General Sewer Plan/Wastewater Facility Plan and The CRWWD Planning and Land Use Model for Sewer (PLUMS) model using Clark County's Comprehensive Plan (2007, with amendments) and Vacant Buildable Lands Model.

**PROPOSED IMPROVEMENTS**

- 199<sup>th</sup> Street Pump Station and Discharge:** Construct a new pump station (NE 199<sup>th</sup> Pump Station) at the corner of NE 199<sup>th</sup> Street and NE 10<sup>th</sup> Avenue. Construct approximately 2075' of 6" force main from the proposed pump station south along NE 10<sup>th</sup> Avenue to the terminus of the 10" Whipple Creek sewer trunk line (\$1,989,000).
- 199<sup>th</sup> Street Trunk Sewer:** Construct approximately 2285' of 12" sanitary sewer trunk line from the intersection of NE 14<sup>th</sup> Avenue and NE 179<sup>th</sup> Street north to approximately NE 187<sup>th</sup> Street. Construct approximately 835' of 10" sanitary sewer trunk line from the terminus of the previously described 12" sewer trunk line west to NE 10<sup>th</sup> Avenue. (\$511,000).
- Whipple Creek Trunk Sewer:** Construct approximately 775 LF of new 12" sanitary sewer trunk line in NE 179<sup>th</sup> Street from the Fairgrounds Pump Station to NE 10<sup>th</sup> Avenue, and 1450 LF of new 18" sanitary sewer trunk line from NE 10<sup>th</sup> Avenue to the new 15<sup>th</sup> Avenue Pump Station. Following construction of the Whipple Creek Trunk Sewer, the Fairgrounds Pump Station can be decommissioned. (\$745,000).

- 15<sup>th</sup> Avenue Pump Station and Discharge:** Construct a new 1.0 mgd pump station (NE 15<sup>th</sup> Avenue Pump Station) southwest of the 179<sup>th</sup> Street/15<sup>th</sup> Avenue intersection. Construct a new 2300 LF force main from the 15<sup>th</sup> Avenue Pump Station to the 18" sanitary trunk downstream in NE 15<sup>th</sup>. (\$1,596,000)
- Whipple Creek North Pump Station Force Main Upgrade:** Construct 2900 LF of 10" force main parallel to the existing 8" force main, increasing the maximum combined flow to 3800 gpm. (\$672,000).
- 15<sup>th</sup> Avenue Trunk.** Construct 1600 LF of new 18" sanitary sewer trunk parallel to the existing 12" trunk in NE 15<sup>th</sup> Avenue. (\$1,060,000).
- Union Road Pump Station Force Main Upgrade.** Construct 1380 LF of 12" force main parallel to the existing force main, increasing maximum combined flow to 4100 gpm (5.9 mgd). (\$358,000).
- Packard Creek Pump Station and Discharge.** Construct approximately 3870' of 10" sewer trunk line from the existing fairgrounds pump station site, then north to NE 184<sup>th</sup> Street, and west along NE 184<sup>th</sup> Street. Construct approximately 2525' of 6" force main north from the end of the 10" sewer trunk to approximately NW 192<sup>nd</sup> Street, then west to Packard Creek Pump Station. Construct a new pump station (Packard Creek Pump Station) at the end of the new 6" Force Main. Construct approximately 1360' of 15" sewer trunk in NE 179<sup>th</sup> Street from I-5 to the existing Fairgrounds Pump Station. (\$3,530,000).

**PERTINENT DATA**

Public Wells Yes \_\_\_\_\_ No  X   
 Purveyor:  
 Location:

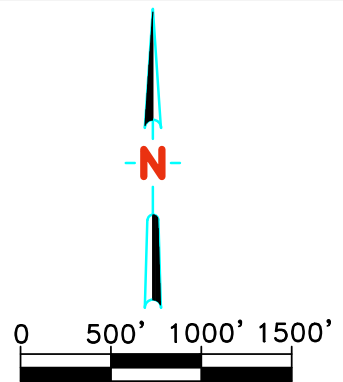
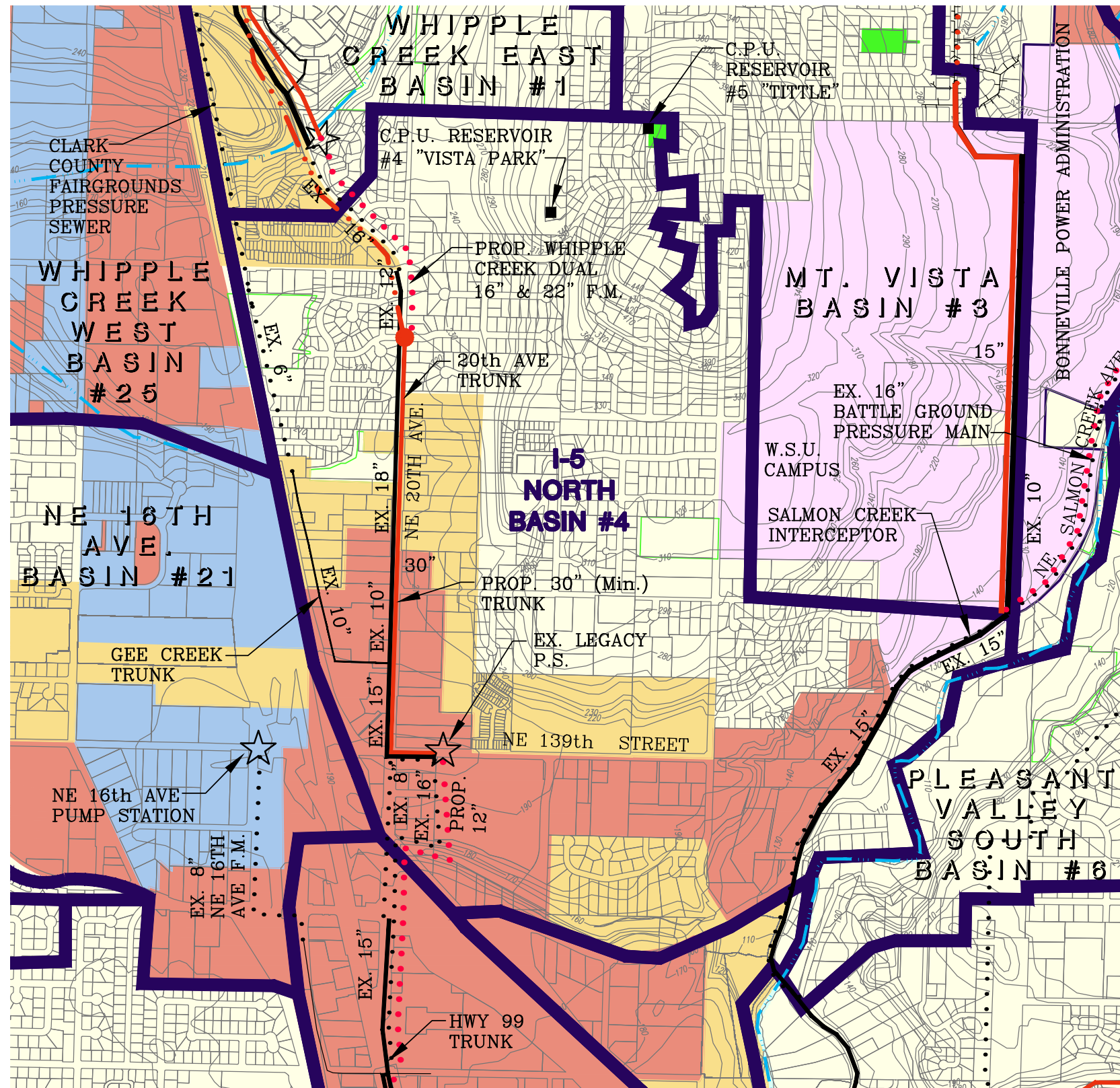
Public Reservoirs Yes \_\_\_\_\_ No  X   
 Purveyor:  
 Location:

**LAND USES WITHIN THE BASIN:**

The northern part of this basin and areas along the Interstate-5 corridor are generally zoned for commercial, light industrial and mixed uses. In the southern part of the basin and areas away from the Interstate-5 corridor, land use is predominantly residential.

**FINANCING OF IMPROVEMENTS:**

AVAILABLE FUNDING MECHANISMS	YES	NO
CRWWD Capital Improvement Fund	X	
Public Grants	X	
Revenue Bonds	X	
Public Loans (e.g., PWTF)	X	
Utility Local Improvements Districts (Revenue Bonds-ULID)	X	
Developer Extensions (privately financed)	X	
Individual Extensions (privately financed)	X	



**LEGEND**

- New Basin Boundary
- Ex. Basin Boundary
- Sub-Basin Boundary
- Proposed UGA Boundary, Oct. 2006
- Proposed Urban Reserve Boundary, Oct. 2006
- Urban Growth Boundary
- Ex. 8" Sanitary Sewer
- Ex. Pressure Sewer
- Ex. Trunk Sewer
- Ex. Parallel Trunk Sewer
- Ex. Pump Station
- Ex. Private/Temp. Pump Station
- Ex. M.O.V. Station
- Prop. 8" Sanitary Sewer
- Prop. Pressure Sewer
- Prop. Trunk Sewer
- Prop. Parallel Trunk Sewer
- Prop. Pump Station
- Prop. Private/Temp. Pump Station
- Point of Trunk Sewer Diameter Change
- Prop. M.O.V. Station
- Water Reservoir
- Temporarily Pumped into Basin

<span style="display: inline-block; width: 20px; height: 10px; background-color: lightgreen; border: 1px solid black;"></span> AG-20	<span style="display: inline-block; width: 20px; height: 10px; background-color: lightblue; border: 1px solid black;"></span> CF	<span style="display: inline-block; width: 20px; height: 10px; background-color: purple; border: 1px solid black;"></span> MH	<span style="display: inline-block; width: 20px; height: 10px; background-color: pink; border: 1px solid black;"></span> RURAL 5	<span style="display: inline-block; width: 20px; height: 10px; background-color: orange; border: 1px solid black;"></span> RURAL 10, RURAL 20	<span style="display: inline-block; width: 20px; height: 10px; background-color: lightorange; border: 1px solid black;"></span> UNDESIGNATED ZONING
<span style="display: inline-block; width: 20px; height: 10px; background-color: lightpink; border: 1px solid black;"></span> University	<span style="display: inline-block; width: 20px; height: 10px; background-color: brown; border: 1px solid black;"></span> OC	<span style="display: inline-block; width: 20px; height: 10px; background-color: yellow; border: 1px solid black;"></span> R1-5, R1-6, R1-7.5, R1-10, R1-20	<span style="display: inline-block; width: 20px; height: 10px; background-color: green; border: 1px solid black;"></span> Parks Wildlife	<span style="display: inline-block; width: 20px; height: 10px; background-color: lightgrey; border: 1px solid black;"></span> UR-10	
<span style="display: inline-block; width: 20px; height: 10px; background-color: red; border: 1px solid black;"></span> C-2, C-3, CH, CH-12, CL	<span style="display: inline-block; width: 20px; height: 10px; background-color: blue; border: 1px solid black;"></span> BP, ML	<span style="display: inline-block; width: 20px; height: 10px; background-color: yellow; border: 1px solid black;"></span> R-12, R-18, R-22, R-30, R-43, OR-43	<span style="display: inline-block; width: 20px; height: 10px; background-color: cyan; border: 1px solid black;"></span> Water	<span style="display: inline-block; width: 20px; height: 10px; background-color: grey; border: 1px solid black;"></span> UR-20	

**Kennedy/Jenks Consultants**

Prepared by:



ENGINEERS SURVEYORS PLANNERS  
1325 SE TECH CENTER DRIVE, SUITE 140 VANCOUVER, WA 98683  
(360) 695-3411 (303) 269-6726 (866) 695-3411 FAX (360) 695-0833

www.mackaysposito.com



**BASIN 4  
I-5 NORTH**

**REVISED SHEET (MAR 2013)**



**BASIN 04  
I-5 NORTH**

**TRIBUTARY TREATMENT PLANT:  
SALMON CREEK (SCWWTP)  
TOTAL AREA 619 AC**

**BASIN DESCRIPTION:**

The Interstate-5 North basin is bounded by Interstate-5 on the west, NE 29<sup>th</sup> Avenue on the east, NE 159<sup>th</sup> Street on the north, and NE 134<sup>th</sup> Street on the south.

**GENERAL BASIN IMPROVEMENT INFORMATION:**

Capital improvement is required in the Interstate-5 North basin. A larger trunk sewer in NE 20<sup>th</sup> Avenue will be required to accommodate the flow from this basin as well as flow from the 209<sup>th</sup> Street Force Main. This trunk drains to the existing Legacy Pump Station. The existing Legacy Pump Station contains three pumps, each with an approximate pumping capacity of 1200 gpm. To accommodate future flows, the existing pumps will be replaced with larger pumps. The Legacy Pump Station can discharge to both 8" and 16" force mains (the 16" force main contains a small segment of 14" pipe at the SR 205 crossing). Currently the Legacy Pump Station discharges to the 8" diameter force main based on flow demand. Once the inflow to the pump station reaches approximately 2.9 mgd, the pump station will discharge to the existing 16" force main. When flows exceed 4.3 mgd, both force mains will be used. Ultimately, a new 12" force main will be provided. Current operational practice is to switch discharge back and forth between the two force mains. It is anticipated that based on the proposed improvements, the District will be able to serve all areas adjacent to this basin.

**BASIN GROWTH TABLE:**

Item	Year 1997	Year 2006	Year 2012	Year 2018	Year 2026	Ultimate
Population	2416	3398	4052	4707	5579	6452
E.R.U.s	994	1398	1668	1937	2296	2665
Peak Flow (MGD)	0.62	0.87	1.04	1.20	1.43	1.65

**Note:** The population, E.R.U.s, and Peak Flow represent the status of the basin at the end of the year shown. The capital improvements shown are the sum of the proposed improvements for the years prior to and including the year shown. Flow and ERU projections are based on projections in the City of Ridgefield General Sewer Plan/Wastewater Facility Plan and The CRWWD Planning and Land Use Model for Sewer (PLUMS) model using Clark County's Comprehensive Plan (2007, with amendments) and Vacant Buildable Lands Model.

**PROPOSED IMPROVEMENTS**

1. The Legacy Pump Station will be upgraded in several phases to provide a maximum month capacity of 6.0 mgd. The first phase includes wetwell modifications, three new 60 hp pumps providing firm maximum month capacity of 3.0 mgd, a new generator, odor control, and site improvements (\$1,158,000). In the second phase, the 60 hp pumps will be replaced with 140 hp pumps to increase the firm maximum month pumping capacity to 6.0 mgd, and a new 12" force main will be constructed. The new force main will follow the alignment of the existing 16" force main and connect to the existing gravity sewer at NE 129<sup>th</sup>. (\$1,780,000).

2. Replace approximately 3800' of existing 10", 12", 15" and 18" sanitary sewer trunk with a 30" sanitary trunk in NE 20<sup>th</sup> Avenue between the Legacy Pump Station and NE 152<sup>nd</sup> Street. This project will be completed in two phases. Phase 1 will replace 10" and 12" diameter segments with 30" pipe (\$855,000) and Phase 2 will replace the remaining 15" and 18" segments with 30" (\$2,423,000).

**PERTINENT DATA**

Public Wells Yes \_\_\_\_\_ No  X   
 Purveyor:  
 Location:

Public Reservoirs Yes  X  No \_\_\_\_\_  
 Purveyor: Clark Public Utilities  
 Location: #4 Vista Park at NE 25<sup>th</sup> Ave. and NE 156<sup>th</sup> Street, and #5 Title at the 2700 block of NE 159<sup>th</sup> Street.

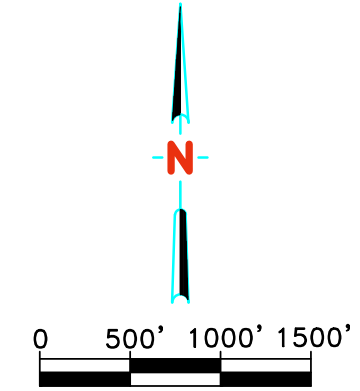
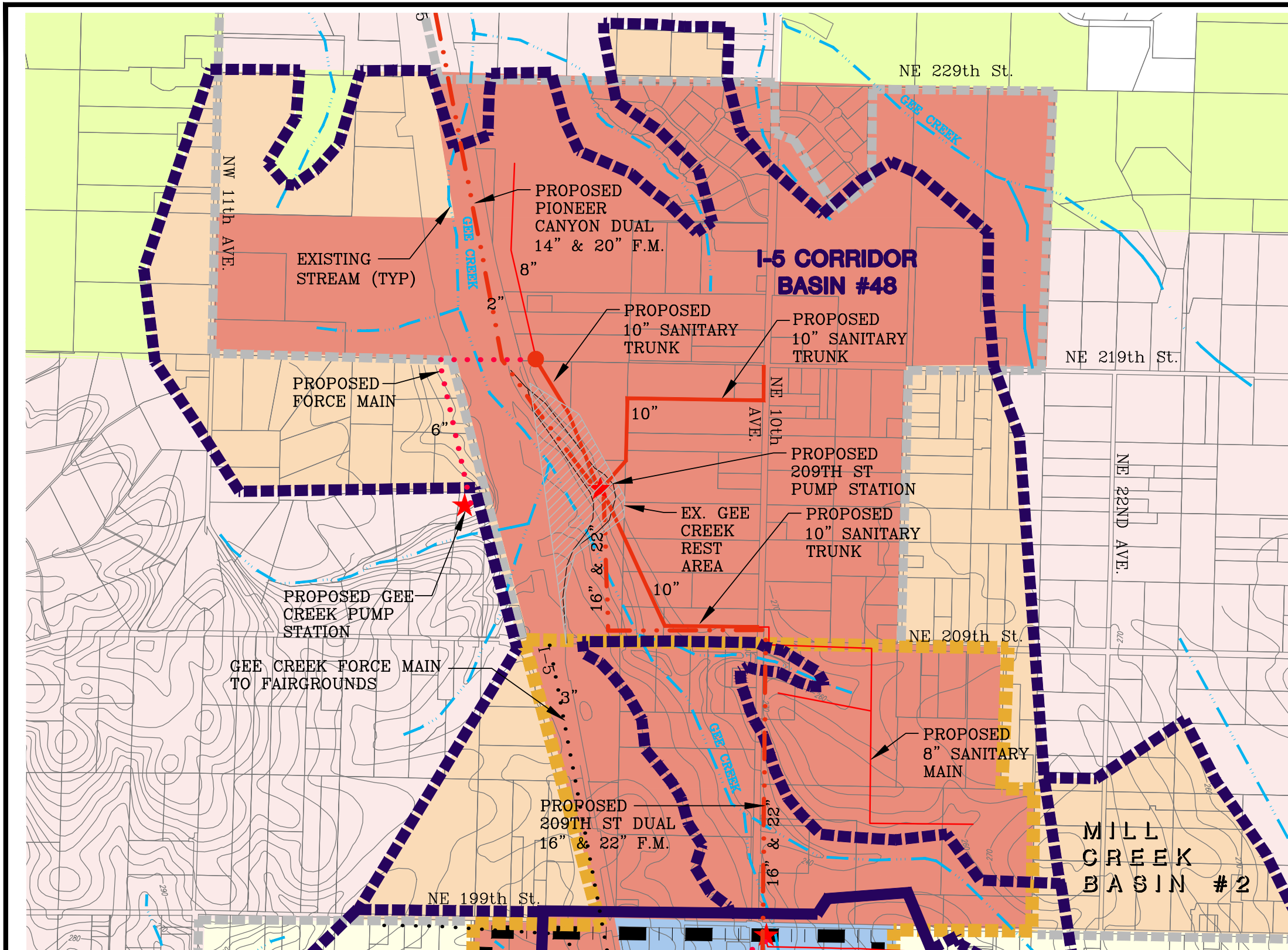
**LAND USES WITHIN THE BASIN:**

This basin is currently within the Urban Growth Area. Area in the south and west are zoned commercial and high density residential. Areas in the north and east are zoned low density residential.

**FINANCING OF IMPROVEMENTS:**

AVAILABLE FUNDING MECHANISMS	YES	NO
CRWWD Capital Improvement Fund	X	
Public Grants	X	
Revenue Bonds	X	
Public Loans (e.g., PWTF)	X	
Utility Local Improvements Districts (Revenue Bonds-ULID)	X	
Developer Extensions (privately financed)	X	
Individual Extensions (privately financed)	X	





**LEGEND**

- New Basin Boundary
- Ex. Basin Boundary
- Sub-Basin Boundary
- Proposed UGA Boundary, Oct. 2006
- Proposed Urban Reserve Boundary, Oct. 2006
- Urban Growth Boundary
- Ex. 8" Sanitary Sewer
- Ex. Pressure Sewer
- Ex. Trunk Sewer
- Ex. Parallel Trunk Sewer
- Ex. Pump Station
- Ex. Private/Temp. Pump Station
- Ex. M.O.V. Station
- Prop. 8" Sanitary Sewer
- Prop. Pressure Sewer
- Prop. Trunk Sewer
- Prop. Parallel Pressure Sewer
- Prop. Pump Station
- Prop. Private/Temp. Pump Station
- Point of Trunk Sewer Diameter Change
- Prop. M.O.V. Station
- Water Reservoir
- Temporarily Pumped into Basin

AG-20	CF	MH	RURAL 5	RURAL 10, RURAL 20
University	OC	R1-5, R1-6, R1-7.5, R1-10, R1-20	Parks Wildlife	UR-10
C-2, C-3, CH, CH-12, CL	BP, ML	R-12, R-18, R-22, R-30, R-43, OR-43	Water	UR-20

UNDESIGNATED ZONING  
 ZONING ASSUMED FOR COMP. SEWER PLAN  
 SINGLE FAMILY: 196.9 ACRES  
 MULTIFAMILY: 21.9 ACRES  
 COMMERCIAL: 31.7 ACRES  
 INDUSTRIAL: 26.2 ACRES  
 SCHOOL: 6.7 ACRES  
 URBAN RESERVE: 19.6 ACRES  
 PARK: 17.6 ACRES  
 OTHER: 5.7 ACRES

Prepared by:  
**Kennedy/Jenks Consultants**  
**MacKay & Sposito, Inc.**  
 ENGINEERS SURVEYORS PLANNERS  
 1325 SE TECH CENTER DRIVE, SUITE 140 VANCOUVER, WA 98683  
 (360) 695-3411 (303) 269-0726 (866) 695-3411 FAX (360) 695-0833

CLARK REGIONAL WASTEWATER DISTRICT  
**BASIN 48**  
**I-5 CORRIDOR**  
**REVISED SHEET (MAR 2013)**



**BASIN 48  
I-5 CORRIDOR**

**TRIBUTARY TREATMENT PLANT:**

**SALMON CREEK (SCWWTP)**

**TOTAL AREA 1018 AC**

**BASIN DESCRIPTION:**

The basin is bounded approximately by NE 229<sup>th</sup> Street on the north, NE 199<sup>th</sup> Street on the south, and between NW 11<sup>th</sup> Avenue on the west and NE 22<sup>nd</sup> Avenue on the east.

**GENERAL BASIN IMPROVEMENT INFORMATION:**

There are currently no sanitary sewer facilities within the Interstate-5 Corridor basin except the privately owned (State of Washington) Gee Creek Rest Area for north bound Interstate-5 traffic. The southbound facility also pumps to the north bound facility and is currently served by a private pump station and force main which flows along the I-5 median to the Fairgrounds Pump Station. The Washington State Department of Transportation is interested in directly connecting this facility to CRWWD sanitary sewer facilities. Service to this basin will be achieved through the installation of several lift stations. This basin is divided into several subbasins by existing creeks and large drainages within the basin. Sanitary service to much of the basin will likely require the use of alternate (grinder) systems. A proposed 209<sup>th</sup> Street pump station and force main will receive flow from the City of Ridgefield's Pioneer Canyon Pump Station as well as from the Gee Creek Rest Area, and will serve future development in Basin 48. Dual force mains from the proposed 209<sup>th</sup> Street Pump Station will discharge to the 20<sup>th</sup> Avenue Trunk upstream of the Legacy Pump Station. The majority of the basin is outside of the Urban Growth Area (UGA). It is anticipated that based on the proposed improvements, the District will be able to serve additional areas adjacent to this basin.

Most of this basin has been zoned rural residential with urban reserve overlay. Portions of the basin not assigned urban zoning designations by Clark County were assumed to be a mix of residential, multi-family, and urban reserve.

**BASIN GROWTH TABLE:**

Item	Year 1997	Year 2006	Year 2012	Year 2018	Year 2026	Ultimate
Population	0	0	0	952	3492	6031
E.R.U.s	0	0	0	392	1437	2482
CRWWD Peak Flow (MGD)	0.00	0.00	0.00	0.24	0.90	1.55
Ridgefield Peak Flow (MGD)						8.52
Total Peak Flow (MGD)						10.07

**Note:** The population, E.R.U.s, and Peak Flow represent the status of the basin at the end of the year shown. Flow and ERU projections are based on projections in the City of Ridgefield General Sewer Plan/Wastewater Facility Plan and The CRWWD Planning and Land Use Model for Sewer (PLUMS) model using Clark County's Comprehensive Plan (2007, with amendments) and Vacant Buildable Lands Model.

**PROPOSED IMPROVEMENTS**

**1. NE 209<sup>th</sup> Street Pump Station:** Construct the 209th Street pump station in the low area in the vicinity of the Gee Creek North Rest Area east of Interstate 5. The pump station will be constructed in three phases, with the first phase including two pumps with a total firm capacity of 2.5 mgd peak (1.4 mgd max month) (\$3,748,000), a second phase installing a third pump for a

total firm pumping capacity of 4.0 mgd peak (2.2 mgd max month) (\$358,000), and a third phase adding a fourth pump and larger generator (\$548,000). This pump station provides service to Gee Creek Rest Area, allowing the existing private pump station to be decommissioned.

- 2. NE 209<sup>th</sup> Street Force Mains:** Construct approximately 8350' of dual 16" and 22" force mains from the 209<sup>th</sup> Street Pump Station southeast and south to NE 209<sup>th</sup> Street, east on NE 209<sup>th</sup> Street to NE 10th Avenue, and south on NE 10th Avenue, to the 20<sup>th</sup> Avenue Trunk Sewer. The force mains will be constructed in two phases, with the 16" force main built in conjunction with the first phase of the pump station (\$9,939,000) and the 22" force main built when maximum month system flows reach 2.2 mgd (\$7,676,000).
- 3. 219<sup>th</sup> Street Trunk:** Construct approximately 2750' of 10" sanitary sewer trunk line along the future right of way heading west from NE 10th Avenue and then turning south to the Proposed 209<sup>th</sup> Street Pump Station (\$241,000).
- 4. 209<sup>th</sup> Street Trunk:** Construct approximately 2350' of 10" sanitary sewer trunk line in NE 209<sup>th</sup> Avenue from NE 10<sup>th</sup> to the east side of Gee Creek, then turning north to the proposed 209<sup>th</sup> Street Pump Station. Construct approximately 4000' of 8" sanitary sewer trunk line to serve the south east section of Basin 48, along NE 15<sup>th</sup> Ave, turning west along NE 209<sup>th</sup> Street to join the 10" 209<sup>th</sup> Street Sanitary Sewer Trunk (\$343,000).
- 5. Gee Creek Pump Station, pressure main and trunk:** Construct the Gee Creek pump station near the terminus of NW 214<sup>th</sup> Circle west of I-5. Construct approximately 2,000' of 6" pressure main and 1560' of 10" sanitary sewer trunk line to the NE 209<sup>th</sup> pump station west paralleling Gee Creek to NE 219<sup>th</sup> Street. (\$1,105,000) The proposed project B48I02 will be replaced by this construction.

**PERTINENT DATA**

Public Wells Yes \_\_\_\_\_ No  X   
 Purveyor:  
 Location:  
 Public Reservoirs Yes \_\_\_\_\_ No  X   
 Purveyor:  
 Location:

**LAND USES WITHIN THE BASIN:**

Most of this basin is zoned rural residential. Portions of the basin not assigned urban zoning designations by Clark County were assumed to be a mix of residential, multi-family, and urban reserve. Most of this basin is unsewered with the exception being the Gee Creek Rest Area. The County has estimated that this basin will experience 3.6% annual residential growth and 5.4% annual job growth (commercial and industrial growth).

**FINANCING OF IMPROVEMENTS:**

AVAILABLE FUNDING MECHANISMS	YES	NO
CRWWD Capital Improvement Fund	X	
Public Grants	X	
Revenue Bonds	X	
Public Loans (e.g., PWTF)	X	
Utility Local Improvements Districts (Revenue Bonds-ULID)	X	
Developer Extensions (privately financed)	X	
Individual Extensions (privately financed)	X	

## VI. Environmental

REVISED SHEET (MAR 2013)



File: Comprehensive General Sewer Plan Amendment  
DNS 02 - 12

Date Published: May 21, 2012

Please find enclosed an environmental Determination of Non-Significance issued pursuant to the State Environmental Policy Act (SEPA) Rules (Chapter 197-11), Washington Administrative Code.

You may comment on this DNS by submitting written comments within fifteen (15) days of this notice as provided for by WAC 197-11-408 and RCW 36.70B.110.

Please address all correspondence to: **Clark Regional Wastewater District**  
**PO Box 8979**  
**Vancouver, WA 98668-8979**  
**Attn: Steve Bacon**

## DISTRIBUTION LIST

### Federal Agencies

- US Army Corps of Engineers, Portland District
- Northwest Power Planning Council
- Bonneville Power Administration
- US Fish and Wildlife Service, Ridgefield Refuge

### Native American Interests

- Chinook Indian Tribe
- Cowlitz Indian Tribe
- Yakima Indian Nation

### State Agencies

- Department of Archaeology and Historic Preservation
- Department of Community Development
- Department of Ecology – SEPA Review Section
- Department of Health
- Department of Natural Resources – SEPA Center
- Department of Fish and Wildlife
- Department of Transportation
- Department of Commerce

### Regional Agencies

- Fort Vancouver Regional Library
- Battle Ground Branch-FV Library
- Three Creeks Branch-FV Library
- Southwest Clean Air Agency
- Southwest Washington Regional Transportation Council

### Local Agencies

- City of Battle Ground
- City of Camas
- City of La Center
- City of Ridgefield
- City of Vancouver
  - Administration
  - Community Preservation and Development
  - Public Works
- City of Washougal
- City of Woodland
- Clark County Department of Community Development
  - Administration
  - Building Division
  - Central Files
  - Community Planning
  - Historic Preservation
  - Water Quality Division
- Clark County Department of Public Works
  - Administration
  - Environmental Public Health Service
  - Water Resources Program
- Clark County Public Health
- Clark County Conservation District
- Clark County Sheriff's Office
- Port of Camas-Washougal
- Port of Ridgefield
- Port of Vancouver
- Port of Woodland
- Town of Yacolt
- Vancouver-Clark Parks and Recreation

### Special Purpose Agencies

- C-Tran
- CRESA
- Clark Public Utilities
- Battle Ground School District
- Vancouver School District
- Evergreen School District
- Hockinson School District
- Ridgefield School District
- La Center School District
- Washington State University – Vancouver Campus
- Fire Protection District 3
- Fire Protection District 5
- Fire Protection District 6
- Clark County Fire and Rescue
- Fire Protection District 13
- Vancouver Fire Department

**Interest Groups**

- Building Industry Association
- Southwest Washington Contractors Association
- Neighborhood Associations Council of Clark County
- Clark County Natural Resources Council
- Vancouver Housing Authority
- Columbia River Economic Development Council
- Fish First
- Sequoyah Institute
- Sierra Club – Loo Wit
- Vancouver Audubon Society
- Andresen/St. Johns Neighborhood Association
- Daybreak Neighborhood Association
- East Minnehaha Neighborhood Association
- Fairgrounds Neighborhood Association
- Felida Neighborhood Association
- Fern Prairie Neighborhood Association
- Greater Brush Prairie Neighborhood Association
- Green Meadows Neighborhood Association
- Hazel Dell/Salmon Creek Business Association
- Heritage Neighborhood Association
- Maple Tree Neighborhood Association
- Meadow Glade Neighborhood Association
- NE Hazel Dell Neighborhood Association
- North Salmon Creek Neighborhood Association
- Pleasant Highlands Neighborhood Association
- Ramblin' Creek Estates/South Salmon Creek Ave. Neighborhood Association
- Ridgefield Junction Neighborhood Association
- Roads End Neighborhood Association
- Sherwood Hills Neighborhood Association
- Sifton Neighborhood Association
- Sunnyside Neighborhood Association
- West Hazel Dell Neighborhood Association

**DETERMINATION OF NONSIGNIFICANCE**

Description of proposal:

The Clark Regional Wastewater District encompasses approximately 40 square miles of land ranging from single-family residential to industrial uses. The Comprehensive General Sewer Plan (GSP) identifies infrastructure required to provide sanitary sewer service within the District's Service area. This Comprehensive GSP Amendment addresses the individual needs of four sanitary sewer drainage basins associated with conveying flow from the City of Ridgefield through the District's collection system to the Salmon Creek Treatment Plant. Infrastructure needs for the 20-year horizon are estimated, and the cost of the improvements is used to estimate sewer system development charges for the District. Flow triggers are provided for the required improvements so that the timing of future design and construction activities can be adjusted to reflect actual growth in the impacted basins.

Proponent:

**Clark Regional Wastewater District**

Location of proposal, including street address, if any:

**Interstate-5 North Subarea of Clark Regional Wastewater District service area**

Lead Agency: **Clark Regional Wastewater District**

The lead agency for this proposal has determined that it does not have a probable significant adverse impact on the environment. The environmental impact statement (EIS) is not required under RCW 43.21C.030(2)(c). This decision was made after review of a completed environmental checklist and other information on file with the lead agency. This information is available to the public on request.

There is no comment period for this DNS.

This DNS is issued under WAC 197-11-340(2); the lead agency will not act on this proposal for days from the date below. Comments must be submitted by June 5, 2012.

Responsible Official: **John M. Peterson, P.E.**  
Position/Title: **General Manager**  
Telephone: **(360) 993-8819**  
Fax: **(360) 750-7570**  
Address: **Clark Regional Wastewater District  
8000 NE 52nd Ct.  
PO Box 8979  
Vancouver, WA 98668-8979**

Date: 05-16-2012

Signature 

You may appeal this determination to John M. Peterson within fourteen (14) calendar days of the date of this notice. The notice of appeal shall be sufficiently detailed to provide reasonable notice to the Clark Regional Wastewater District of how the person or the person's property is adversely affected by the proposal, any new facts, which would be important to and affect the determination and the reasons why the determination was incorrect.

Any appeal, which is timely filed, shall be scheduled for hearing by the Board of Commissioners no later than 45 days after filing. Within 30 days of the conclusion of the hearing, the Board shall render its decision accompanied by appropriate findings of fact and conclusions of law.

## ENVIRONMENTAL CHECKLIST

### A. BACKGROUND

1. Name of Proposed Project, if applicable:

**Non-project Action: Comprehensive General Sewer Plan (GSP) Amendment for Clark Regional Wastewater District**

2. Name of Applicant: **Clark Regional Wastewater District**

3. Address and Phone Number of Applicant and Contact Person:

**8000 NE 52nd Ct.  
PO Box 8979  
Vancouver, WA 98668-8979  
(360) 993-8819  
Attn: Steve Bacon, P.E., Development Planning Engineer**

4. Date Checklist Prepared:

**May 4, 2012**

5. Agency Requesting Checklist:

**Washington State Department of Ecology**

6. Proposed Timing or Schedule (including phasing, if applicable):

**Adoption of this Comprehensive GSP Amendment for Clark Regional Wastewater District will occur in 2012 following approval by the Washington State Department of Ecology. The schedule for actual capital improvements will be in accordance with individual basin wastewater needs. The GSP includes an estimate of the improvements necessary and the timing of those improvements; however, these are projections and will be adjusted as appropriate to provide the required capacity needed to serve growth. Separate SEPA documents will be prepared for each non-exempt project.**

7. Do you have any plans for future additions, expansions, or further activity related to or connected with this proposal? If yes, please explain.

**The District's Comprehensive GSP is reviewed every seven years and amended as needed to adjust for changes in land use regulations.**

8. List any environmental information you know about that has been or will be prepared related to this proposal:

**The District's current General Sewer Plan included a SEPA checklist, which was reviewed by the responsible lead agency. A Determination of Non-Significance was made. Individual improvement projects may require project specific SEPA checklists and lead agency determinations.**

9. Are other applications pending for governmental approvals affecting the property covered by your proposal? If yes, please explain.

**Within the Clark Regional Wastewater District service area, individual private development and capital facility projects are pending governmental approvals. Improvements identified in the GSP Amendment will allow flow from the City of Ridgefield to be conveyed to the**

**Salmon Creek Treatment Plant; a separate Engineering Report describing that project will be submitted to Ecology for approval.**

10. List any government approvals or permits that will be needed for your proposal.

**Acceptance by Clark County Long Range Planning  
Approval by Clark Regional Wastewater District Commissioners  
Approval by Washington State Department of Ecology**

11. Give a brief, complete description of your proposal, including the proposed uses and size of the project and site. There are several questions addressed later in this checklist that ask you to describe certain aspects of your proposal. You do not need to repeat those answers on this page. (Lead agencies may modify this form to include additional specific information on project description).

**The District encompasses approximately 40 square miles of land ranging from single-family residential to industrial uses. The GSP uses population and employment projections in the County to allocate projected growth into 56 sanitary sewer drainage basins. This Comprehensive GSP Amendment addresses the individual needs of four of these sanitary sewer drainage basins associated with conveying flow from the City of Ridgefield through the District's collection system to the Salmon Creek Treatment Plant. Infrastructure needs for the 20-year horizon are estimated, and the dollar cost of the improvements is used to establish sanitary sewer service General Facilities Charges for the District. Flow triggers are provided for the required improvements so that the timing of future design and construction activities can be adjusted to reflect actual growth in the impacted basins.**

12. Location of the proposal. Give sufficient information for a person to understand the precise location of your proposed project, including street address, section, township, and range. If this proposal occurs over a wide area, please provide the range or boundaries of the site. Also, a legal description, site plan, vicinity map, and topographic map. You are required to submit any plans required by the agency, but not required to submit duplicate maps or plans submitted with permit applications related to this checklist.

**The District office is located at 8000 NE 52nd Court, Vancouver, Washington. The service boundary for the District extends from the City of Vancouver corporate limits on the south to NE 229th Street on the North, primarily including areas within the Urban Growth Boundary; and from Vancouver Lake on the west, and NE 117th Avenue on the east. The District service area generally only includes area within the Urban Growth Area or those areas adjacent to the Urban Growth Area that can drain by gravity sewer to the Urban Growth Boundary. The District is comprised of 56 individual sewer basins; five are tributary to the Vancouver Westside Wastewater Treatment Plant and 51 are tributary to the Salmon Creek Wastewater Treatment Plant.**

**The areas covered in this Comprehensive GSP Amendment are along the Interstate-5 corridor, extending from approximately NE 229th Street on the north to NE 122nd Street on the south.**

**The inclusion of areas outside the Urban Growth Boundary is not intended to encourage development outside the Urban Growth Boundary; however, it is responsible to include all the areas that naturally drain into the sewer basins.**

### B. ENVIRONMENTAL ELEMENTS

1. EARTH

- A. General description of the site (circle one): (flat), (rolling), (hilly), (steep slopes), mountainous, other.

**All of these conditions exist within the areas covered in this Comprehensive GSP Amendment.**

- B. What is the steepest slope on the site and the approximate percentage of the slope?

**Not Applicable to this proposal.**

- C. What general types of soils are found on the site (e.g., clay, sand, gravel, peat, muck)? Please specify the classification of agricultural soils and note any prime farmland.

**The basins covered in this Comprehensive GSP Amendment are tributary to the Salmon Creek Wastewater Treatment Plant. Areas tributary to the Salmon Creek Wastewater treatment Plant consists of the Sauvie-Puyallup association adjacent to Salmon Creek and the Hillsboro-Gee-Odne association in the upland areas from Vancouver Lake to approximately NE 50th Avenue.**

- D. Are there surface indications or history of unstable soils in the immediate vicinity? If so, please describe.

**There are portions of the areas covered in this Comprehensive GSP Amendment which have a history of slope instability. Any projects proposed in those areas would address slope stability concerns at the time of project development.**

- E. Describe the purpose, type and approximate quantities of any filling or proposed grading. Also, indicate the source of fill.

**Not applicable to this proposal. Grading may be required for individual capital improvement projects. These projects will be approved by the Clark Regional Wastewater District for a specific project scope and area.**

- F. Could erosion occur as a result of clearing, construction or use? If so, please describe.

**Not applicable to this proposal. Separate project specific plans for construction will be required, and any erosion prevention and sediment control mitigation measures will be addressed on the construction plans or as a condition of the right-of-way utility permit.**

- G. What percentage of the site will be covered with impervious surfaces after the project construction (e.g., asphalt or buildings)?

**Not applicable to this proposal. On future projects, the installation of capital facilities will not create a significant amount of impervious surface (Only manhole lids, pump station work areas, and similar structures create impervious surfaces).**

- H. Proposed measures to reduce or control erosion, or other impacts to the earth include:

**Not applicable to this proposal. For specific improvement projects, erosion and sediment control practices will limit the amount of sediment leaving the work areas. Plans for capital facility improvements will typically incorporate practical Best Management Practices (BMPs) into the project specific erosion control plans. Other measures will be selected based on particular site requirements.**

2. AIR

- A. What types of emissions to the air would result from the proposal (e.g., dust, automobile, odors, and industrial wood smoke) during construction and after completion? If yes, describe and give approximate quantities.

**Not applicable to this proposal.**

- B. Are there any off-site sources of emissions or odor that may affect your proposal? If so, please describe:

**Not applicable to this proposal.**

- C. Proposed measures to reduce or control emissions or other impacts to air:

**Not applicable to this proposal.**

3. WATER

- A. Surface

1. Is there any surface water body on or in the vicinity of the site (including year-round and seasonal streams, saltwater, lakes, ponds, wetlands)? If yes, describe type and provide names and into which stream or river it flows into.

**The streams within the areas covered in this GSP amendment are Salmon Creek, Whipple Creek, Mill Creek and Gee Creek. Within the boundary, Mill Creek is tributary to Salmon Creek; and Whipple Creek and Gee Creek are tributary to Lake River. All of the surface water bodies within the District's service area eventually drain into the Columbia River.**

**Wetlands exist throughout the area, many in close proximity to the above named surface water bodies.**

2. Will the project require any work within 200 feet of the described waters? If yes, please describe and attach available plans.

**Not applicable to this proposal. Conceptual alignments for capital facilities are shown in this Comprehensive GSP Amendment. Individual projects may be proposed within 200 feet of surface water bodies and would be subject to separate environmental review. Separate SEPA documents will be prepared for each individual project.**

3. Estimate the amount of fill and dredge material that would be placed in or removed from surface water or wetlands and indicate the area of the site that would be affected. Indicate the source of fill material.

**Not applicable to this proposal.**

4. Will the proposal require surface water withdrawals or diversions? Please provide description, purpose and approximate quantities:

**Not applicable to this proposal.**

5. Does the proposal lie within a 100-year floodplain? If so, note location on the site plan.

**Within the areas covered in this GSP amendment, Gee Creek, Salmon Creek, and Mill Creek, have flood profiles prepared by the Federal Emergency Management Agency (FEMA), and include the 100-year flood plain elevation. Specific construction projects will be considered individually as they relate to construction activities within the 100**

**year floodplain. Separate SEPA documents will be prepared for each individual project.**

6. Does the proposal involve any discharges of waste materials to surface waters? If so, describe the type of waste and anticipated volume of discharge.

**Not applicable to this proposal.**

B. Ground

1. Will ground water be withdrawn, or will water be discharged to ground water? Please give description, purpose, and approximate quantities.

**Not applicable to this proposal. Dewatering for individual projects will be addressed in plans specific to the project being proposed.**

2. Describe waste material that will be discharged into the ground from septic tanks or other sources, if any (e.g., domestic sewage; industrial, containing the following chemicals...; agricultural; etc.). Describe the size and number of the systems, houses to be served; or, the number of animals or humans the system are expected to serve.

**Not applicable to this proposal. Abandonment of existing septic systems as public sewer becomes available will decrease the amount of waste currently discharging to the ground.**

C. Water Runoff (including storm water):

1. Describe the source of runoff (including storm water) and the method of collection and disposal. Include quantities, if known. Describe where water will flow, and if it will flow into other water.

**Not applicable to this proposal. The future construction of capital facilities anticipated in this GSP amendment is not anticipated to appreciably increase the amount of surface water runoff. Separate SEPA documents will be prepared for each individual project.**

2. Could waste materials enter ground or surface waters? If so, please describe.

**Not applicable to this proposal. Upon construction of future sanitary sewer systems, overflows could occur due to clogged or damaged pipes or pumping systems and acts of nature. Spills are regulated by the Department of Ecology. Spill response procedures are in place.**

D. Proposed measures to reduce or control surface, ground, and runoff water impacts, if any:

**Proper planning, design, construction, and maintenance of infrastructure minimizes the potential for impacts to surface, ground, and runoff water. The Comprehensive GSP and this Amendment provide the planning required to ensure adequate capacity to minimize potential impacts. District Specifications and emergency response plans help to minimize impacts during construction and maintenance operations.**

4. PLANTS

- A. Check or circle types of vegetation found on the site:

Deciduous tree: alder, maple, aspen, other  
 Evergreen tree: fir, cedar, pine, other  
 Shrubs  
 Grass

Pasture  
 Crop or grain  
 Wet soil plants: cattail, buttercup, bulrush, skunk cabbage, other  
 Water plants: water lily, eelgrass, milfoil, other  
 Other types of vegetation

- B. What kind and amount of vegetation will be removed or altered?

**Not applicable to this proposal. Specific projects will be considered individually.**

- C. List any threatened or endangered species known to be on or near the site.

**None known.**

- D. List proposed landscaping, use of native plants, or other measures to preserve or enhance vegetation on the site:

**Not applicable to this proposal. Specific projects will be considered individually.**

5. ANIMALS

- A. Circle any birds and animals which have been observed on or near the site:

Birds: (hawk), (heron), (eagle), (songbirds), other: monk parrot  
Mammals: (deer), (bear), elk, (beaver), other: raccoons, opossums  
Fish: (bass), (salmon), (trout), herring, shellfish, other: \_\_\_\_\_

- B. List any threatened or endangered species known to be on or near the site.

**Bald Eagles may reside within the areas shown in this Comprehensive GSP Amendment.**

- C. Is the site part of a migration route? If so, please explain.

**The entire region is part of the Pacific Flyway.**

- D. List proposed measures to preserve or enhance wildlife:

**Not applicable to this proposal. Individual site assessment may be required as specific projects are proposed.**

6. ENERGY AND NATURAL RESOURCES

- A. What kinds of energy (electric, natural gas, oil, wood stove, solar) will be used to meet the completed project's energy needs? Describe whether it will be used for heating, manufacturing, etc.

**Not applicable to this proposal. Gas, oil, and diesel will be used by equipment during specific project construction. Electrical power will be used for pumping, lighting, heating, ventilation, and other mechanical needs at pump stations.**

- B. Would your project affect the potential use of solar energy by adjacent properties? If so, please describe.

**No.**

- C. What kinds of energy conservation features are included in the plans of this proposal? List other proposed measures to reduce or control energy impacts:



***New or expanded pump stations will be designed to operate at optimum efficiency. New buildings, if any, will comply with Washington State Nonresidential Energy Code requirements.***

## 7. ENVIRONMENTAL HEALTH

- A. Are there any environmental hazards, including exposure to toxic chemicals, risk of fire and explosion, spill, or hazardous waste that could occur as a result of this proposal? If so, please describe.

***Not applicable to this proposal.***

1. Describe special emergency services that might be required.

***None anticipated.***

2. Proposed measures to reduce or control environmental health hazards, if any?

***Not applicable to this proposal.***

***The installation of public sewers may reduce health hazards, as homes with failing septic systems are given the opportunity to connect to public sewer.***

- B. Noise

1. What types of noise exist in the area which may affect your project (e.g., traffic, equipment operation, other)?

***None.***

2. What types and levels of noise are associated with the project on a short-term or a long-term basis (e.g., traffic, construction, operation, other)? Indicate what hours the noise would come from the site.

***Not applicable to this proposal.***

3. Proposed measures to reduce or control noise impacts:

***Not applicable to this proposal.***

## 8. LAND AND SHORELINE USE

- A. What is the current use of the site and adjacent properties?

***Land use within the areas covered in this Comprehensive GSP Amendment is a variety of low, medium, and high density residential; commercial and industrial applications; and agricultural uses.***

- B. Has the site been used for agriculture? If so, describe.

***Some properties within the areas covered in this Comprehensive GSP Amendment are used for pasture and gardens. These areas are not anticipated to be impacted by construction of the proposed sewers and pump stations. Agriculturally-zoned properties are located adjacent to, but outside of, the District's service area boundary.***

- C. Describe any structures on the site.

***Structures within the areas covered in this Comprehensive GSP Amendment are typical of the uses listed in section 8A above.***

- D. Will any structures be demolished? If so, please describe?

***Not applicable to this proposal.***

- E. What is the current zoning classification of the site?

***Commercial (C-2, C-3), Highway Commercial (CH, CH-12), Limited Commercial (CL), Freeway Commercial (CF), Office Commercial (OC), Business Park (BP), Limited Industrial (ML), Office Residential (OR-43), Single-Family residential (R1-5, R1-6, R1-7.5, R1-10, R1-20), multi-family residential (R-12, R-18, R-22, R-30, R-43), and Public Facilities.***

- F. What is the current comprehensive plan designation of the site?

***Urban Low Density Residential, Urban Medium Density Residential, Urban High Density Residential, Mixed Use, Office Park, Light Industrial, Open Space, and Public Facilities.***

- G. What is the current shoreline master program designation of the site?

***Not applicable to the Comprehensive GSP Amendment. Specific projects will be evaluated for the shoreline master program designation.***

- H. Has any part of the site been classified as an "environmentally sensitive" area? If so, please specify.

***Yes, there are areas of sensitive lands within the areas covered in this GSP amendment. Examples include the 100-year flood plain, shoreline management areas, wetlands and wetland buffers, and critical habitat areas. Improvements within these areas will address the impacts on a project specific basis.***

- I. How many people would reside or work in the completed project?

***Not applicable to this proposal.***

- J. How many people would the completed project displace?

***None.***

- K. Please list proposed measures to avoid or reduce displacement impacts:

***Not applicable to this proposal.***

- L. List proposed measures to ensure the proposal is compatible with existing and projected land uses and plans:

***The Comprehensive GSP Amendment purpose is to plan for the provision of sanitary sewer at a level of service adequate for the projected land uses and populations. The plan is created to ensure that service and land uses proposed are compatible.***

## 9. HOUSING

- A. Approximately how many units would be provided? Indicate whether it's high, middle, or low income housing.

***Not applicable to this proposal.***

- B. Approximately how many units, if any, would be eliminated? Indicate whether it's high, middle, or low-income housing.

***None.***

- C. List proposed measures to reduce or control housing impacts:

*Not applicable to this proposal.*

#### 10. AESTHETICS

- A. What is the tallest height of any proposed structure(s), not including antennas? What is proposed as the principal exterior building materials?

*Not applicable to this proposal. Pump station enclosures are the only above ground structures likely to be constructed relative to the improvements outlined in this Comprehensive GSP Amendment. Structures will not exceed one story in height.*

- B. What views in the immediate vicinity would be altered or obstructed?

*None.*

- C. Proposed measures to reduce or control aesthetic impacts:

*None.*

#### 11. LIGHT AND GLARE

- A. What type of light or glare will be proposal produce? What time of day would it mainly occur?

*Not applicable to this proposal.*

- B. Could light or glare from the finished project be a safety hazard or interfere with views?

*No.*

- C. What existing off-site sources of light or glare may affect your proposal?

*None.*

- D. Proposed measures to reduce or control light and glare impacts:

*Not applicable to this proposal.*

#### 12. RECREATION

- A. What designated and informal recreational opportunities are in the immediate vicinity?

*County parks, ball fields, school yards, neighborhood parks, and trail systems offer recreational opportunities within the areas covered in this GSP amendment.*

- B. Would the project displace any existing recreational uses? If so, please describe.

*No.*

- C. Proposed measures to reduce or control impacts on recreation, including recreational opportunities to be provided by the project or applicant:

*None anticipated. For future projects, mitigation measures will be considered on a case-by-case basis. Specific construction plans would detail any closures.*

#### 13. HISTORIC AND CULTURAL PRESERVATION

- A. Are there any places or objects listed on or near the site which are listed or proposed for national, state, or local preservation registers? If so, please describe.

*Not applicable to this proposal. Specific projects will be evaluated for areas of historical and/or cultural significance.*

- B. Please describe any landmarks or evidence of historic, archaeological, scientific, or cultural importance known to be on or next to the site.

*Not applicable to this proposal. Clark County's Historic Preservation Ordinance (40.250.030) identifies, protects, and preserves eligible historic and cultural resources. Individual project proposals would include a pre-determination request to Clark County to evaluate if further study of specific project areas is required.*

- C. Proposed measures to reduce or control impacts:

*Not applicable to this proposal. During project-level environmental review, a thorough records search will be conducted to identify potential historic or archaeological resources. In the event potential cultural resources are discovered during excavations at the site, work will be suspended immediately. Artifacts uncovered would be evaluated by a professional archaeologist or historian before construction in the area of discovery is allowed to resume.*

#### 14. TRANSPORTATION

- A. Identify public streets and highways serving the site, and describe proposed access to the existing street system. Show on site plans, if any.

*Please refer to individual basin maps in the Comprehensive GSP Amendment or the Clark Regional Wastewater District service map.*

- B. Is the site currently served by public transit? If not, what is the approximate distance to the nearest transit stop?

*Yes, C-Tran has routes within the areas covered in this GSP amendment.*

- C. How many parking spaces would the completed project have? How many would the project eliminate?

*Not applicable to this proposal.*

- D. Will the proposal require any new roads or streets, or improvements to existing roads or streets, not including driveways? If so, please describe and indicate whether it's public or private.

*No.*

- E. Will the project use water, rail, or air transportation? If so, please describe.

*No.*

- F. How many vehicular trips per day would be generated by the completed project? Indicate when peak traffic volumes would occur.

*Not applicable to this proposal.*

- G. Proposed measures to reduce or control transportation impacts:

*None.*

15. PUBLIC SERVICES

A. Would the project result in an increased need for public services (e.g., fire protection, police protection, health care, schools, other)? If so, please describe.

No.

B. Proposed measures to reduce or control direct impacts on public services.

Not applicable to this proposal.

16. UTILITIES

A. Circle the utilities currently available at the site: (Electricity), (natural gas), (water), (refuse service), (telephone), (sanitary sewer), (septic system), other.

Most of these utilities are available to specific areas covered in this Comprehensive GSP Amendment.

B. Describe the utilities that are proposed for the project, the utility providing the service, and the general construction activities on or near the site.

None with this proposal. Sanitary sewer service from Clark Regional Wastewater District would be added with any future projects.

C. SIGNATURE

The above answers are true and complete to the best of my knowledge. I understand that the lead agency is relying on them to make its decision.

Signature: A.D. Roh Krause

Date Submitted: 5-15-2012

D. SEPA Supplemental sheet for non-project actions

INSTRUCTIONS:

Because these questions are very general, it may be helpful to read them in conjunction with the list of the elements of the environment. When answering these questions, be aware of the extent of the proposal and the types of activities likely to result from this proposal. Please respond briefly and in general terms.

- 1. How would the proposal increase discharge to water; emissions to air; production, storage, or release of toxic or hazardous substances; or production of noise?

The Comprehensive General Sewer Plan (GSP) Amendment provides a list of projects necessary to accommodate the projected 20-year sewer flow. The basis for the GSP is the Clark County Comprehensive Plan and the growth projections provided by the Washington State Office of Financial Management. The increase in population, and the resultant specific improvement projects will increase the potential discharges to water and air, and produce some construction related noise. Without the projects identified in the GSP Amendment, sanitary sewer service to residential, commercial, or industrial users would be difficult or impossible. These users would then rely on septic systems that pose a higher risk of polluting the ground and waters of the State than public sewer. This plan provides for sanitary sewer service to areas designated as urban areas.

Proposed measures to avoid or reduce such increases are:

Specific projects will be required to identify and address any adverse impacts created. Mitigation of the impacts will be evaluated on a project-by-project basis. Construction work will be performed in compliance with applicable local ordinances.

- 2. How would the proposal be likely to affect plants, animals, fish, or marine life?

This proposal will not adversely impact plants, animals, fish, or marine life. Specific projects will identify and address possible adverse impacts.

Proposed measures to protect or conserve plants, animals, fish, or marine life are:

Specific projects will be required to identify and address any adverse impacts created. Mitigation of the impacts will be evaluated on a project-by-project basis. Construction work will be performed in compliance with applicable local ordinances and project specific permits.

- 3. How would the proposal be likely to deplete energy or natural resources?

This proposal will not deplete energy or natural resources. The improvements identified in the Comprehensive GSP Amendment maximize the use of gravity sanitary sewer service. Where this is not feasible, alternatives such as pump stations and force mains have been proposed. Pump stations use energy to pump raw sewage to treatment facilities or other gravity sewers; however, the amount of energy required is not significant.

Proposed measures to protect or conserve energy and natural resources are:

Improvements will be designed to operate as efficiently as possible and will use energy efficient fixtures where practical and cost effective. (e.g. lights, pumps, etc.)

4. How would the proposal use or affect environmentally sensitive areas or those designated (or eligible or under study) for governmental protection; such as parks, wilderness, wild and scenic rivers, threatened or endangered species habitat, historic or cultural sites, wetlands, floodplains, or prime farmlands?

***This proposal takes into account environmentally sensitive areas as part of the master-planning of the capital facilities. Some capital facilities proposed within the 20-year planning horizon may use or affect some of these sensitive areas; however, the impacts of individual projects will be considered against the environmental regulations adopted at the time the specific improvement plans are developed.***

Proposed measures to protect such resources or to avoid or reduce impacts are:

***Projects will be designed to avoid impacts to environmentally sensitive areas to the extent possible. Prior to construction, project-specific environmental reviews or environmental impact statements will be prepared as required and appropriate mitigation implemented.***

5. How would the proposal be likely to affect land and shoreline use? Will it allow or encourage land or shoreline uses incompatible with existing plans?

***This proposal will not affect land and shoreline use. Interceptor and trunk sewer construction may occur within 200' of surface water bodies within the areas covered in this GSP amendment. When capital facilities identified in the Comprehensive GSP Amendment become necessary, project review will consider various construction alternatives including placement of facilities near shorelines. All projects must receive appropriate permits prior to commencing construction.***

Proposed measures to avoid or reduce shoreline and land use impacts are:

***Some conventional construction projects adjacent to surface water bodies may prove too costly to construct, and alternatives (e.g., pump stations and force mains constructed in less sensitive areas) may be considered and analyzed for economic benefit and environmental impact.***

6. How would the proposal be likely to increase demands on transportation or public services and utilities?

***This plan provides a framework that outlines the needed improvements to the public sanitary sewer within the area of Clark County designated for urban development. The increase in demand on other services is correlated to the increase in demand for sanitary sewer; however, one does not cause the other.***

Proposed measures to reduce or respond to such demand(s) are:

***Not applicable to this proposal.***

7. Identify whether the proposal may conflict with local, state, or federal laws or requirements for the protection of the environment.

***This proposal is not in conflict with local, state, or federal laws for the protection of the environment. The work outlined in the Comprehensive GSP Amendment must be planned within the framework of the existing environmental laws.***

Affidavit of Publication  
STATE OF WASHINGTON)

) ss:  
County of Clark )  
Columbian

ACCTS PAYABLE  
CLARK REGIONAL WASTEWATER-I  
PO BOX 8979  
VANCOUVER WA 98668-8979

REFERENCE: 70989 DNS I-5 N SUBAREA  
3185323 DETERMINATION OF NON

I, the undersigned say,  
That I am over the age of eighteen and not interested in the above entitled matter; that I am now, and at all time embraced in the publication herein mentioned, was, the principal clerk of the printer of The Columbian, a daily newspaper printed, published and circulated in the said county and adjudged a newspaper of general circulation by the Superior Court of the County of Clark, State of Washington, under Proceeding No. 802006715; that the advertisement, of which the annexed is a true printed copy, was published in the above-named newspaper on the following dates, to wit:

PUBLISHED ON: 05/21

TOTAL COST: 178.12  
FILED ON: 05/21/12

I Certify (or declare) under penalty of perjury that the foregoing is true and correct.

Signature Alan Woodman

**DETERMINATION OF NONSIGNIFICANCE**  
Description of proposal:  
The Clark Regional Wastewater District encompasses approximately 40 square miles of land ranging from single-family residential to industrial uses. The Comprehensive General Sewer Plan (GSP) identifies infrastructure required to provide sanitary sewer service within the District's service area. This Comprehensive GSP Amendment addresses the individual needs of four sanitary sewer drainage basins associated with conveying flow from the City of Ridgefield through the District's collection system to the Salmon Creek Treatment Plant. Infrastructure needs for the 20-year horizon are estimated, and the cost of the improvements is used to estimate sewer system development charges for the District. Flow triggers are provided for the required improvements so that the timing of future design and construction activities can be adjusted to reflect actual growth in the impacted basins.  
Proponent:  
Clark Regional Wastewater District  
Location of proposal, including street address, if any:  
Interstate-5 North Subarea of Clark Regional Wastewater District service area  
Lead Agency:  
Clark Regional Wastewater District  
The lead agency for this proposal has determined that it does not have a probable significant adverse impact on the environment. The environmental impact statement (EIS) is not required under RCW 43.21C.03(2)(c). This decision was made after review of a completed environmental checklist and other information on file with the lead agency. This information is available to the public on request.  
There is no comment period for this DNS.

This DNS is issued under WAC 197-11-34(4)(2), the lead agency will not act on this proposal for days from the date below. Comments must be submitted by June 5, 2012.  
Responsible Official:  
John M. Peterson, P.E.  
Position/Title: General Manager  
Telephone: (360) 993-8819  
Fax: (360) 750-7570  
Address:  
Clark Regional Wastewater District  
8900 NE Ezed Ct.  
PO Box 8979  
Vancouver, WA 98668-8979  
Date: May 16, 2012. Signature  
You may appeal this determination to John M. Peterson within fourteen (14) calendar days of the date of this notice. The notice of appeal shall be sufficiently detailed to provide reasonable notice to the Clark Regional Wastewater District of how the person or the person's property is adversely affected by the proposal, any new facts, which would be important to and affect the determination and the reasons why the determination was incorrect.  
Any appeal, which is timely filed, shall be scheduled for hearing by the Board of Commissioners no later than 45 days after filing. Within 30 days of the conclusion of the hearing, the Board shall render its decision accompanied by appropriate findings of fact and conclusions of law.  
May 21 446303

Bernie Dundas  
360.993.8823

-----Original Message-----

From: Bernie Dundas  
Sent: Friday, May 18, 2012 2:23 PM  
To: Steve Bacon ([SBacon@crwwd.com](mailto:SBacon@crwwd.com))  
Subject: FW: SEPA Notification: CRWWD 052112 Comprehensive GSP Amendment DNS 02-12

FYI. I thanked them for their response.

Bernie Dundas  
360.993.8823

-----Original Message-----

From: Brad Windler [<mailto:BradW@c-tran.org>]  
Sent: Friday, May 18, 2012 2:17 PM  
To: Bernie Dundas  
Subject: RE: SEPA Notification: CRWWD 052112 Comprehensive GSP Amendment DNS 02-12

C-TRAN has no comment

-----Original Message-----

From: Bernie Dundas [<mailto:bdundas@crwwd.com>]  
Sent: Wednesday, May 16, 2012 5:17 PM  
To: [Phil.Wuest@ci.vancouver.wa.us](mailto:Phil.Wuest@ci.vancouver.wa.us); [clarissa.bowen@cityofvancouver.us](mailto:clarissa.bowen@cityofvancouver.us); [scott.sawyer@ci.battle-ground.wa.us](mailto:scott.sawyer@ci.battle-ground.wa.us); [bmeats@clarkcd.org](mailto:bmeats@clarkcd.org); [ccuinc@yahoo.com](mailto:ccuinc@yahoo.com); [ClarkCountyNeighbors@hotmail.com](mailto:ClarkCountyNeighbors@hotmail.com); [permitreview@cowlitz.org](mailto:permitreview@cowlitz.org); [culture@cowlitz.org](mailto:culture@cowlitz.org); DevRev; [karpjd@comcast.net](mailto:karpjd@comcast.net); [gaudeamus@earthlink.net](mailto:gaudeamus@earthlink.net); [friendsofclarkcounty@gmail.com](mailto:friendsofclarkcounty@gmail.com); [sdsego@habitatbank.com](mailto:sdsego@habitatbank.com)  
Cc: Steve Bacon; Linda Bauer  
Subject: SEPA Notification: CRWWD 052112 Comprehensive GSP Amendment DNS 02-12

Please find attached Clark Regional Wastewater District's "052112 Comprehensive General Sewer Plan Amendment DNS 02-12."

Address all correspondence to:  
Clark Regional Wastewater District  
PO Box 8979 Vancouver WA 98668-8979  
Attn: Steve Bacon, P.E. Development Planning Engineer  
(360) 993-8819

Bernie Dundas  
Administrative Assistant III | Clark Regional Wastewater District

T: 360.993.8823 | F: 360.750.7570 | E: [bdundas@crwwd.com](mailto:bdundas@crwwd.com)  
<http://www.crwwd.com>