

SOIL CAPABILITIES FOR FOREST USE

COMPREHENSIVE PLAN



FIGURE 21

HYDRIC SOILS

COMPREHENSIVE PLAN



SOIL CAPABILITIES FOR AGRICULTURAL USE

COMPREHENSIVE PLAN

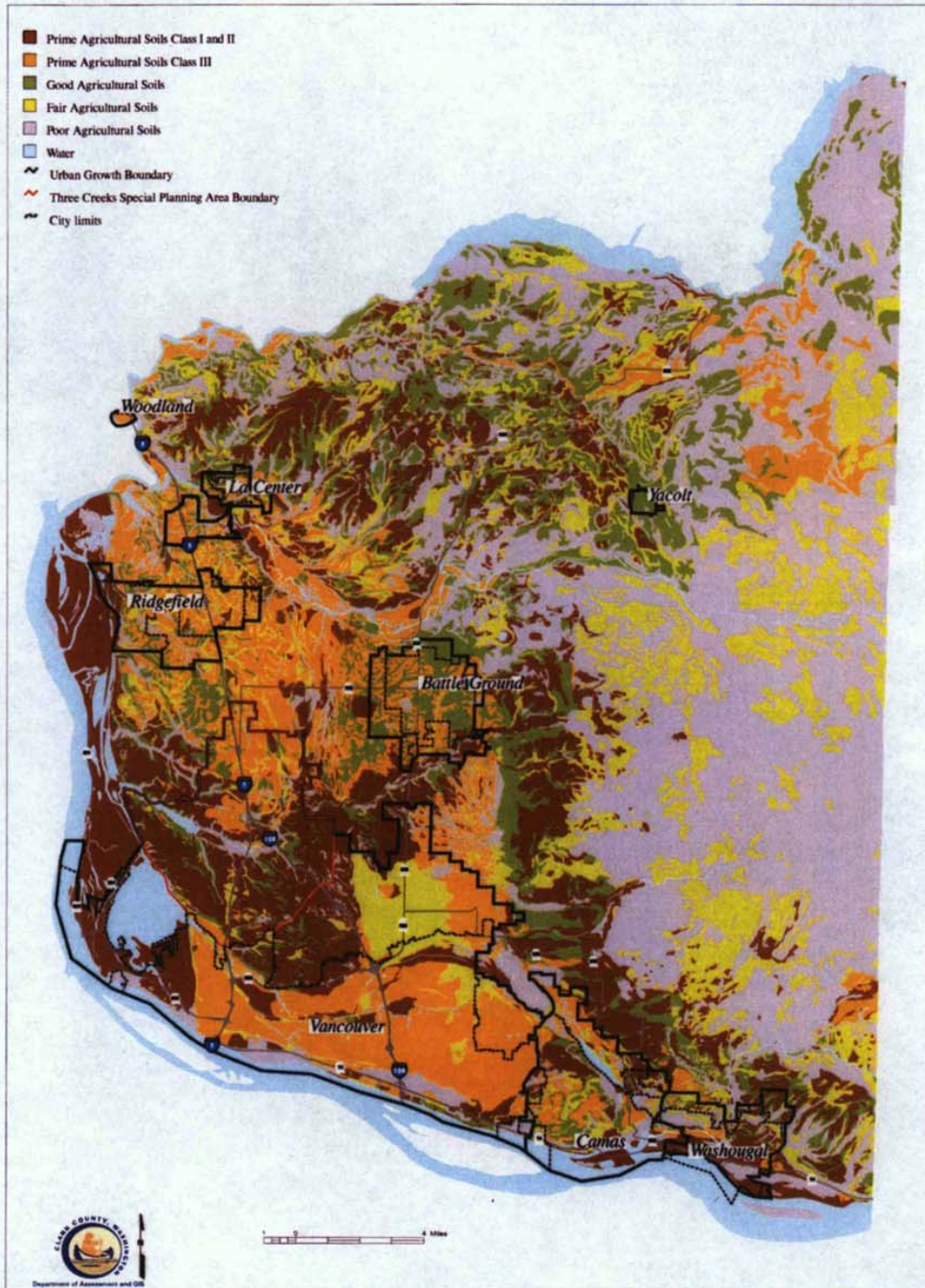
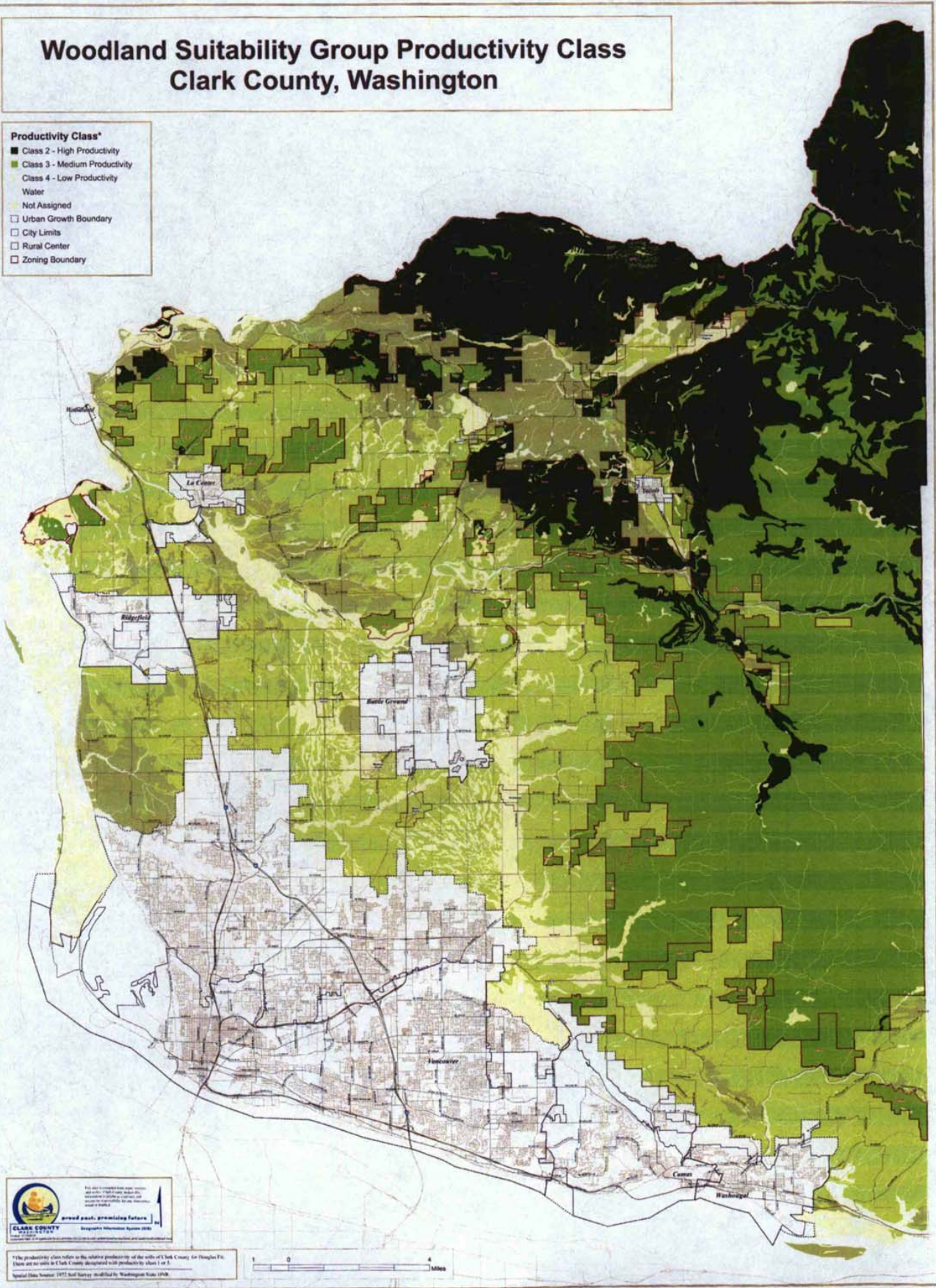


FIGURE 72

Woodland Suitability Group Productivity Class Clark County, Washington

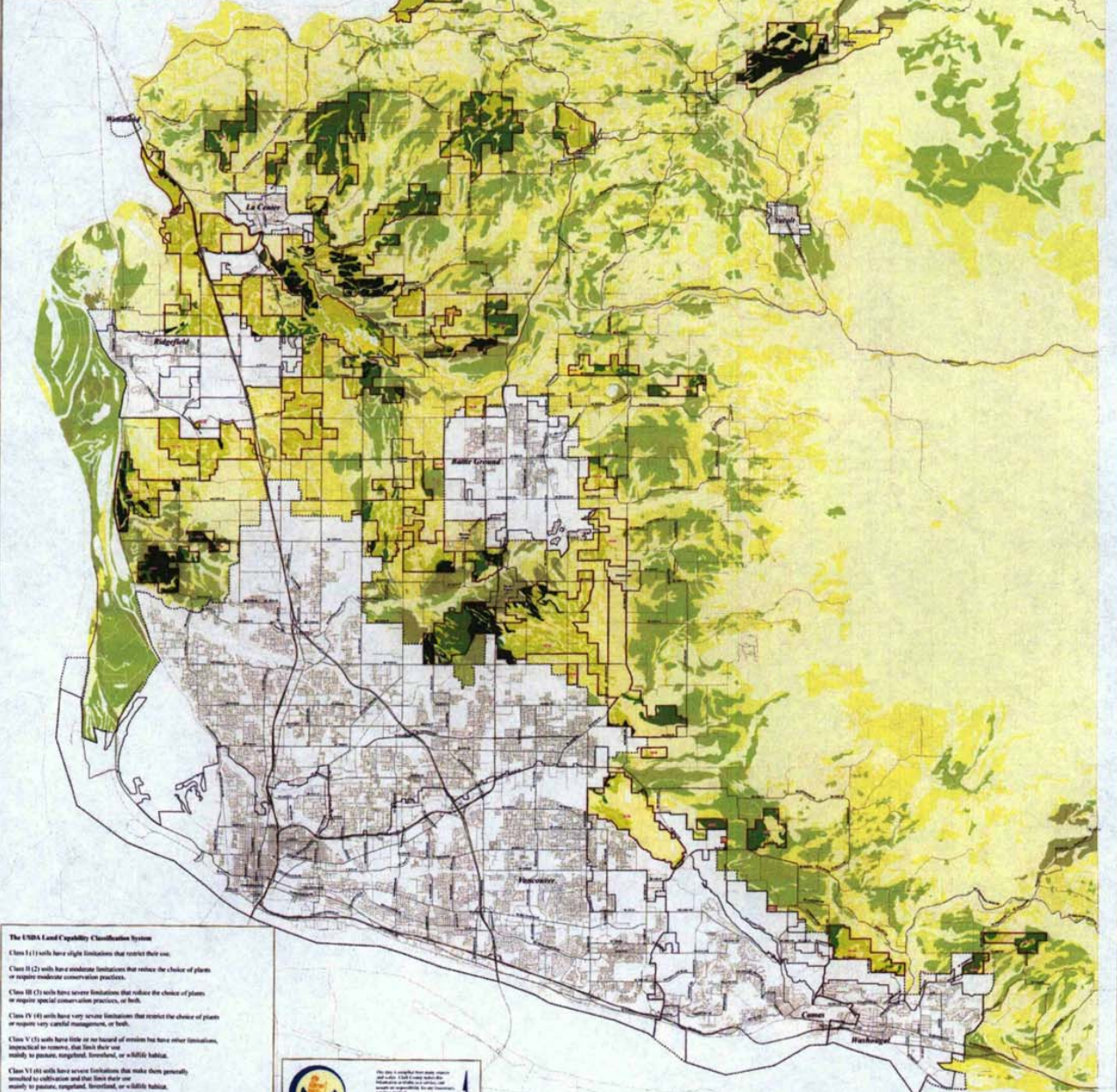
- Productivity Class***
- Class 2 - High Productivity
 - Class 3 - Medium Productivity
 - Class 4 - Low Productivity
 - Water
 - Not Assigned
 - Urban Growth Boundary
 - City Limits
 - Rural Center
 - Zoning Boundary



*The productivity class refers to the relative productivity of the soils of Clark County for Douglas-Fir. There are no soils in Clark County designated with productivity class 1 or 5.
Special Data Source: 1977 Soil Survey modified by Washington State 1998.

Land Capability Classes Clark County, Washington

- Land Capability Classes***
- Class I
 - Class II
 - Class III
 - Class IV
 - Class VI
 - Class VII
 - Class VIII
 - Water
 - Urban Growth Boundary
 - City Limits
 - Rural Center
 - Zoning Boundary



The USDA Land Capability Classification System

Class I (1) soils have slight limitations that restrict their use.

Class II (2) soils have moderate limitations that restrict the choice of plants or require moderate conservation practices.

Class III (3) soils have severe limitations that reduce the choice of plants or require special conservation practices, or both.

Class IV (4) soils have very severe limitations that restrict the choice of plants or require very careful management, or both.

Class V (5) soils have little or no hazard of erosion but have other limitations, impractical to remove, that limit their use mainly to pasture, rangeland, or wildlife habitat.

Class VI (6) soils have severe limitations that make them generally unsuitable for cultivation and that restrict their use mainly to pasture, rangeland, forestland, or wildlife habitat.

Class VII (7) soils have very severe limitations that make them unsuitable for cultivation and that restrict their use mainly to rangeland, forestland, or wildlife habitat.

Class VIII (8) soils and miscellaneous areas have limitations that preclude their use for commercial plant production and limit their use mainly to recreation, wildlife habitat, water supply, or esthetic purposes.

Spatial Data Source: 1972 Soil Survey modified by Washington State CNR.

CLARK COUNTY
WASHINGTON

PLANNING DEPARTMENT
1000 WEST 10TH AVENUE, SUITE 100
VANCOUVER, WASHINGTON 98660
PHONE: (360) 575-3000
FAX: (360) 575-3001
WWW.CLARKCOUNTYWA.GOV

soil prod. planning factors
Interagency Information System (IIS)

1 0 4 Miles

