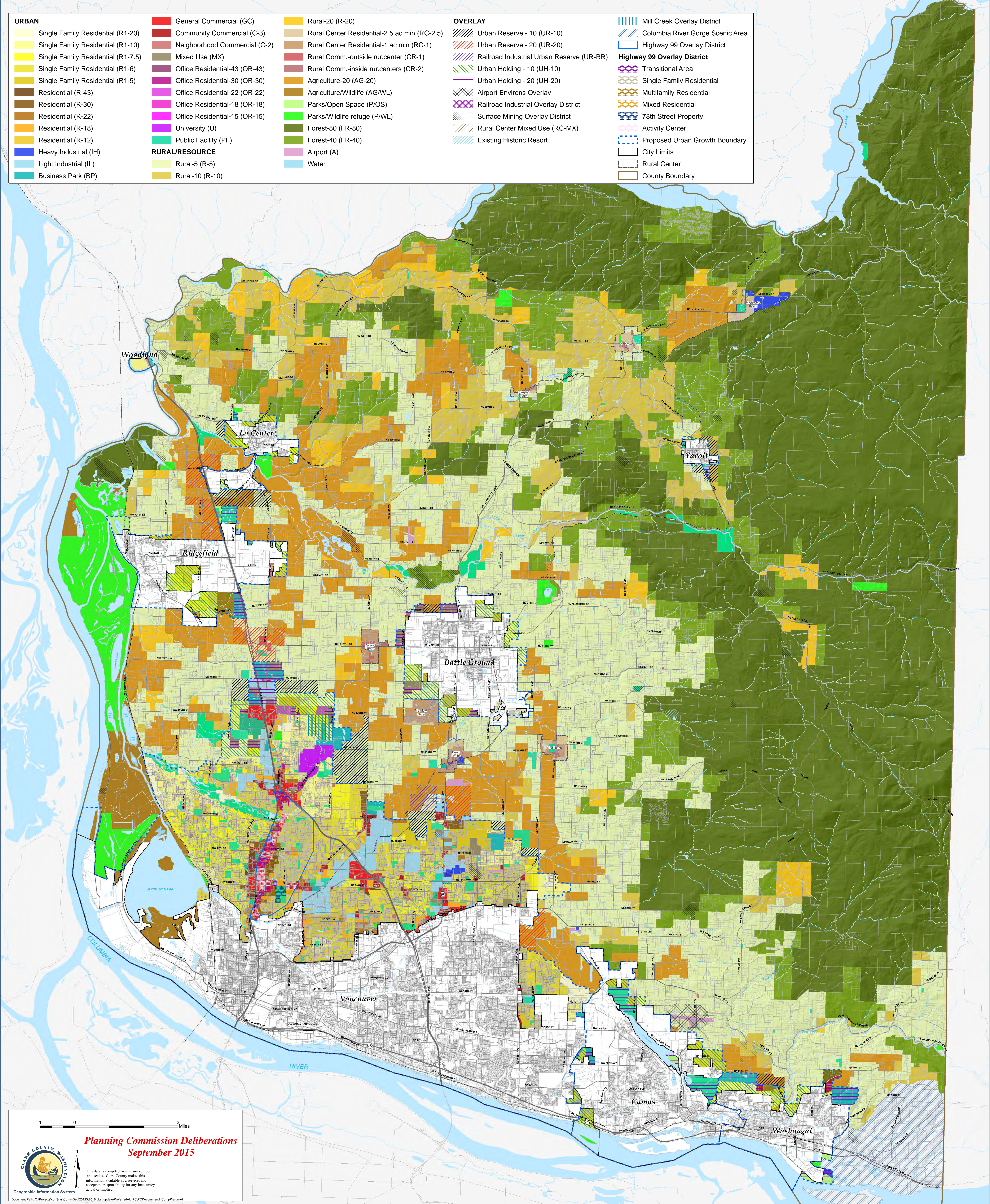


2016 Comprehensive Plan Update

Planning Commission Recommendation - Zoning

URBAN	General Commercial (GC)	Rural-20 (R-20)	OVERLAY	Mill Creek Overlay District
Single Family Residential (R1-20)	Community Commercial (C-3)	Rural Center Residential-2.5 ac min (RC-2.5)	Urban Reserve - 10 (UR-10)	Columbia River Gorge Scenic Area
Single Family Residential (R1-10)	Neighborhood Commercial (C-2)	Rural Center Residential-1 ac min (RC-1)	Urban Reserve - 20 (UR-20)	Highway 99 Overlay District
Single Family Residential (R1-7.5)	Mixed Use (MX)	Rural Comm.-outside rur.center (CR-1)	Railroad Industrial Urban Reserve (UR-RR)	Highway 99 Overlay District
Single Family Residential (R1-6)	Office Residential-43 (OR-43)	Rural Comm.-inside rur.centers (CR-2)	Urban Holding - 10 (UH-10)	Transitional Area
Single Family Residential (R1-5)	Office Residential-30 (OR-30)	Agriculture-20 (AG-20)	Urban Holding - 20 (UH-20)	Single Family Residential
Residential (R-43)	Office Residential-22 (OR-22)	Agriculture/Wildlife (AG/WL)	Airport Environs Overlay	Multifamily Residential
Residential (R-30)	Office Residential-18 (OR-18)	Parks/Open Space (P/OS)	Railroad Industrial Overlay District	Mixed Residential
Residential (R-22)	Office Residential-15 (OR-15)	Parks/Wildlife refuge (P/WL)	Surface Mining Overlay District	78th Street Property
Residential (R-18)	University (U)	Forest-80 (FR-80)	Rural Center Mixed Use (RC-MX)	Activity Center
Residential (R-12)	Public Facility (PF)	Forest-40 (FR-40)	Existing Historic Resort	Proposed Urban Growth Boundary
Heavy Industrial (IH)	RURAL/RESOURCE	Airport (A)		City Limits
Light Industrial (IL)	Rural-5 (R-5)	Water		Rural Center
Business Park (BP)	Rural-10 (R-10)			County Boundary



1 0 3 Miles

Clark County Washington

*Planning Commission Deliberations
September 2015*

This data is compiled from many sources and scales. Clark County makes this information available as a service, and accepts no responsibility for any inaccuracy, actual or implied.

Geographic Information System

Document Path: Q:\Projects\GIS\CommDev\2012\2016 plan update\Deliberations_PCPCRecommendation_CompPlan.mxd