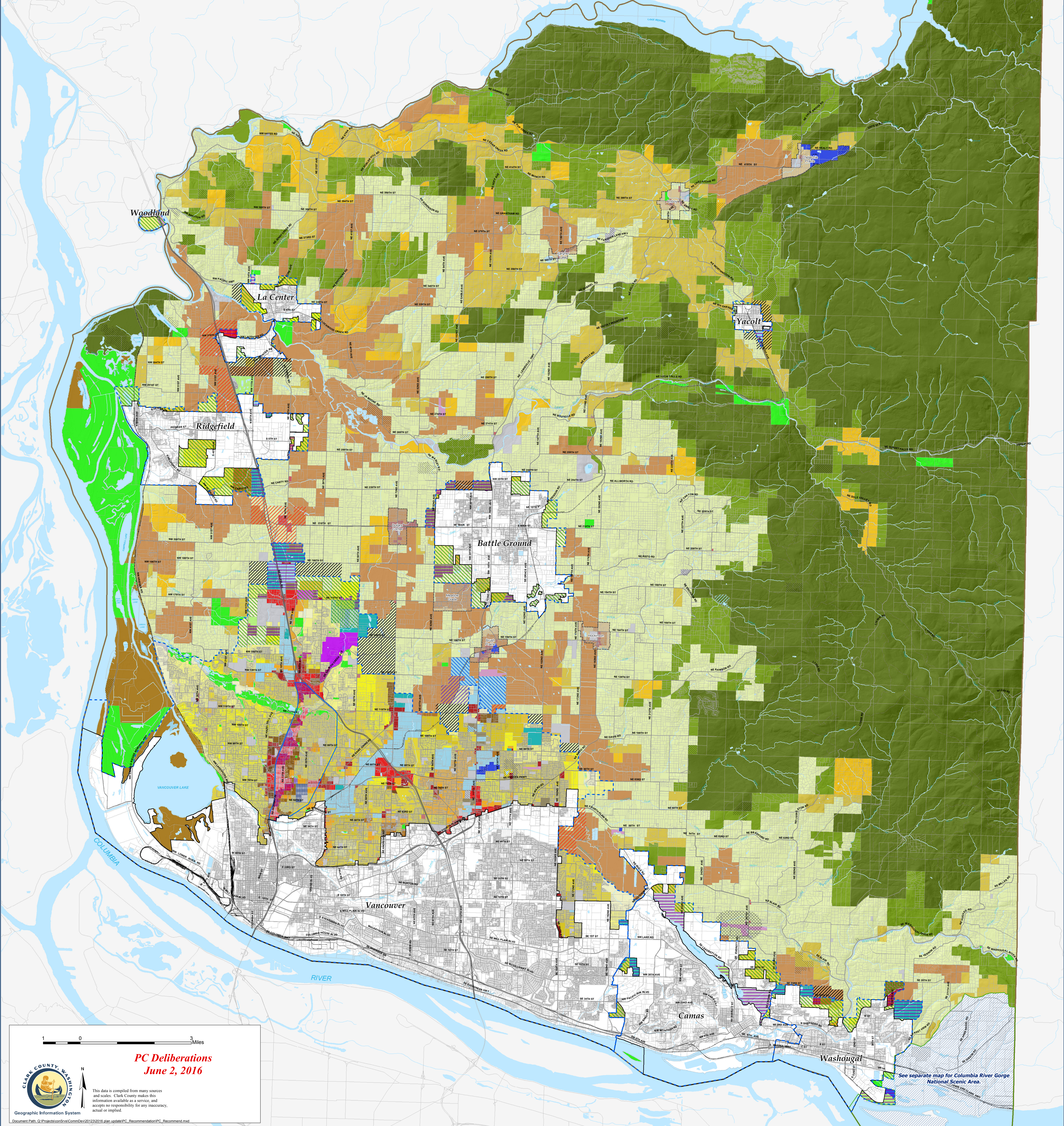


2016 Comprehensive Plan Update Planning Commission Recommendation - Zoning

URBAN		General Commercial (GC)		Rural Center Residential-2.5 ac min (RC-2.5)		OVERLAY DISTRICT		Highway 99 Overlay District		Other	
Single Family Residential (R1-20)	General Commercial (GC)	Rural Center Residential-1 ac min (RC-1)	Urban Reserve - 10 (UR-10)	Existing Historic Resort	Preferred Urban Growth Area (UGA) Boundary	Public Facilities (PF)	Mill Creek Overlay District	Transitional Area	City Limits	Parks/Wildlife Refuge (P/WL)	Surface Mining Overlay District
Single Family Residential (R1-10)	Community Commercial (C-3)	Rural Comm.-outside rur.center (CR-1)	Urban Reserve - 20 (UR-20)	Mill Creek Overlay District	City Limits	Parks/Open Space (P/OS)	Columbia River Gorge Scenic Area	Single Family Residential	Rural Center	Rural-20 (R-20)	Railroad Industrial Overlay District
Single Family Residential (R1-7.5)	Neighborhood Commercial (C-2)	Rural Comm.-inside rur.centers (CR-2)	Rural Industrial Land Bank Overlay	Columbia River Gorge Scenic Area	Rural Center	Rural-10 (R-10)	Railroad Industrial Urban Reserve (UR-RR)	Multifamily Residential	Columbia River Gorge NSA	Rural-10 (R-10)	Surface Mining Overlay District
Single Family Residential (R1-6)	Mixed Use (MX)	Agriculture-20 (AG-20)	Urban Holding - 10 (UH-10)	Highway 99 Overlay District	Columbia River Gorge NSA	Rural-5 (R-5)	Urban Holding - 20 (UH-20)	Mixed Residential	County Boundary	Rural-5 (R-5)	Railroad Industrial Urban Reserve (UR-RR)
Single Family Residential (R1-5)	Office Residential-43 (OR-43)	Agriculture/Wildlife (AG/WL)	Airport Environs Overlay	Highway 99 Overlay District	County Boundary	University (U)	Forest-80 (FR-80)	78th Street Property			Surface Mining Overlay District
Residential (R-43)	Office Residential-30 (OR-30)	Forest-40 (FR-40)	Railroad Industrial Overlay District	Transitional Area			Forest-40 (FR-40)	Activity Center			Railroad Industrial Overlay District
Residential (R-30)	Office Residential-22 (OR-22)	Water	Surface Mining Overlay District	Single Family Residential			Water				Surface Mining Overlay District
Residential (R-22)	Office Residential-18 (OR-18)	OTHER	Rural Center Mixed Use (RC-MX)	Multifamily Residential			Public Facilities (PF)				Rural Center Mixed Use (RC-MX)
Residential (R-18)	Office Residential-15 (OR-15)	Public Facilities (PF)		Mixed Residential			Parks/Wildlife Refuge (P/WL)				
Residential (R-12)	University (U)	Parks/Wildlife Refuge (P/WL)		78th Street Property			Parks/Open Space (P/OS)				
Heavy Industrial (IH)	Rural-20 (R-20)	Parks/Open Space (P/OS)		Activity Center			Airport (A)				
Light Industrial (IL)	Rural-10 (R-10)	Airport (A)									
Business Park (BP)	Rural-5 (R-5)										



1 0 3 Miles

**PC Deliberations
June 2, 2016**

CLARK COUNTY WASHINGTON

Geographic Information System

This data is compiled from many sources and scales. Clark County makes this information available as a service, and accepts no responsibility for any inaccuracy, actual or implied.

Document Path: Q:\Projects\GIS\CommDev\2012\2016\plan_update\PC_Recommendation\PC_Recommendation.mxd

See separate map for Columbia River Gorge National Scenic Area.