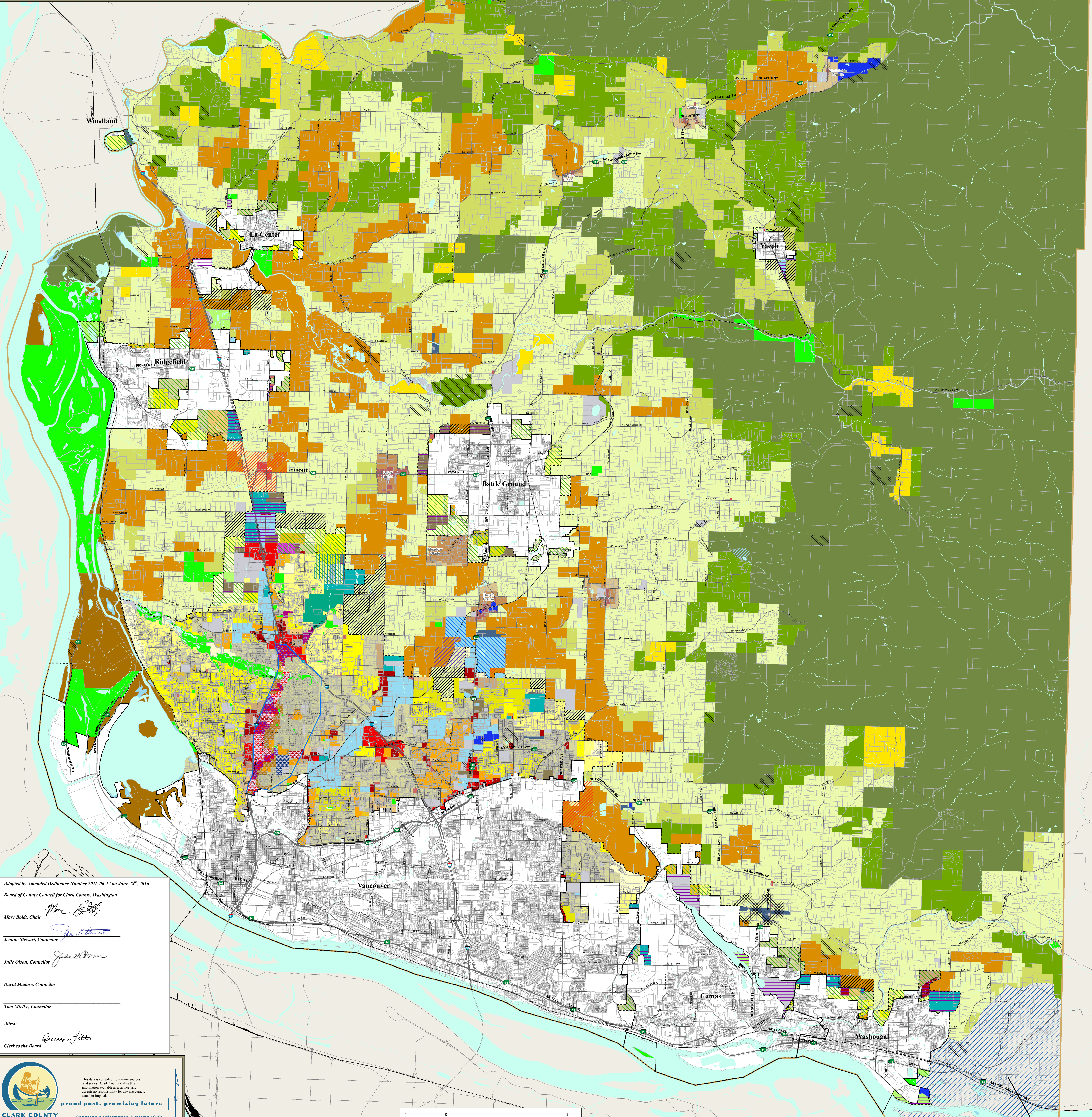


# County/UGA Zoning Clark County, Washington

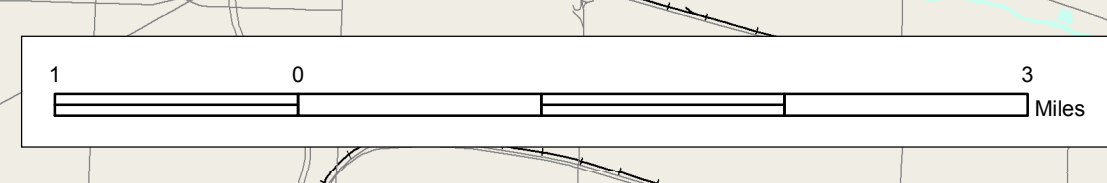
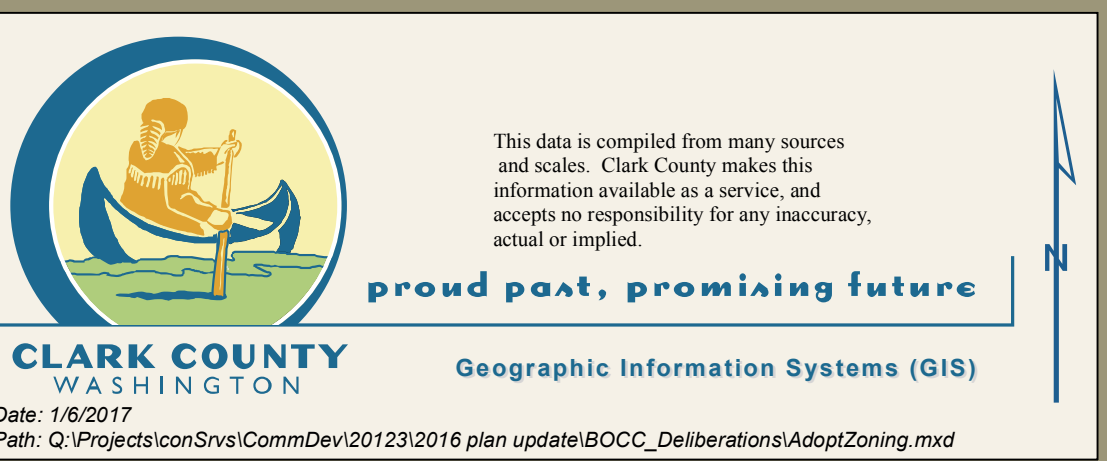
URBAN	RURAL/RESOURCE	OTHER
Single Family Residential (R1-20)	Rural-5 (R-5)	Public Facilities (PF)
Single Family Residential (R1-10)	Rural-10 (R-10)	Airport (A)
Single Family Residential (R1-7.5)	Rural-20 (R-20)	University (U)
Single Family Residential (R1-6)	Rural Center Residential-1 ac min (RC-1)	Parks/Open Space (POS)
Single Family Residential (R1-5)	Rural Center Residential-2.5 ac min (RC-2.5)	Parks/Wildlife refuge (P/WL)
Residential (R-43)	Rural Comm-inside n/cr centers (CR-2)	
Residential (R-30)	Rural Comm-outside n/cr center (CR-1)	
Residential (R-22)	Agriculture/Wildlife (AG/WL)	
Residential (R-18)	Agriculture-10 (AG-10)	
Residential (R-12)	Forest-80 (FR-80)	
Office Residential-43 (OR-43)	Forest-20 (FR-20)	
Office Residential-30 (OR-30)		
Office Residential-22 (OR-22)		
Office Residential-18 (OR-18)		
Office Residential-15 (OR-15)		
Light Industrial (LI)		
Business Park (BP)		
Heavy Industrial (HI)		
Neighborhood Commercial (NC)		
General Commercial (GC)		
Community Commercial (CC)		
Mixed Use (MX)		



Adopted by Amended Ordinance Number 2016-06-12 on June 28<sup>th</sup>, 2016.  
 Board of County Council for Clark County, Washington

Marc Boldt, Chair  
 Jeanne Stewart, Councilor  
 Julie Olson, Councilor  
 David Madore, Councilor  
 Tom Mielke, Councilor

Attest:  
 Rebecca J. Fisher  
 Clerk to the Board



See separate map for Columbia River Gorge National Scenic Area.