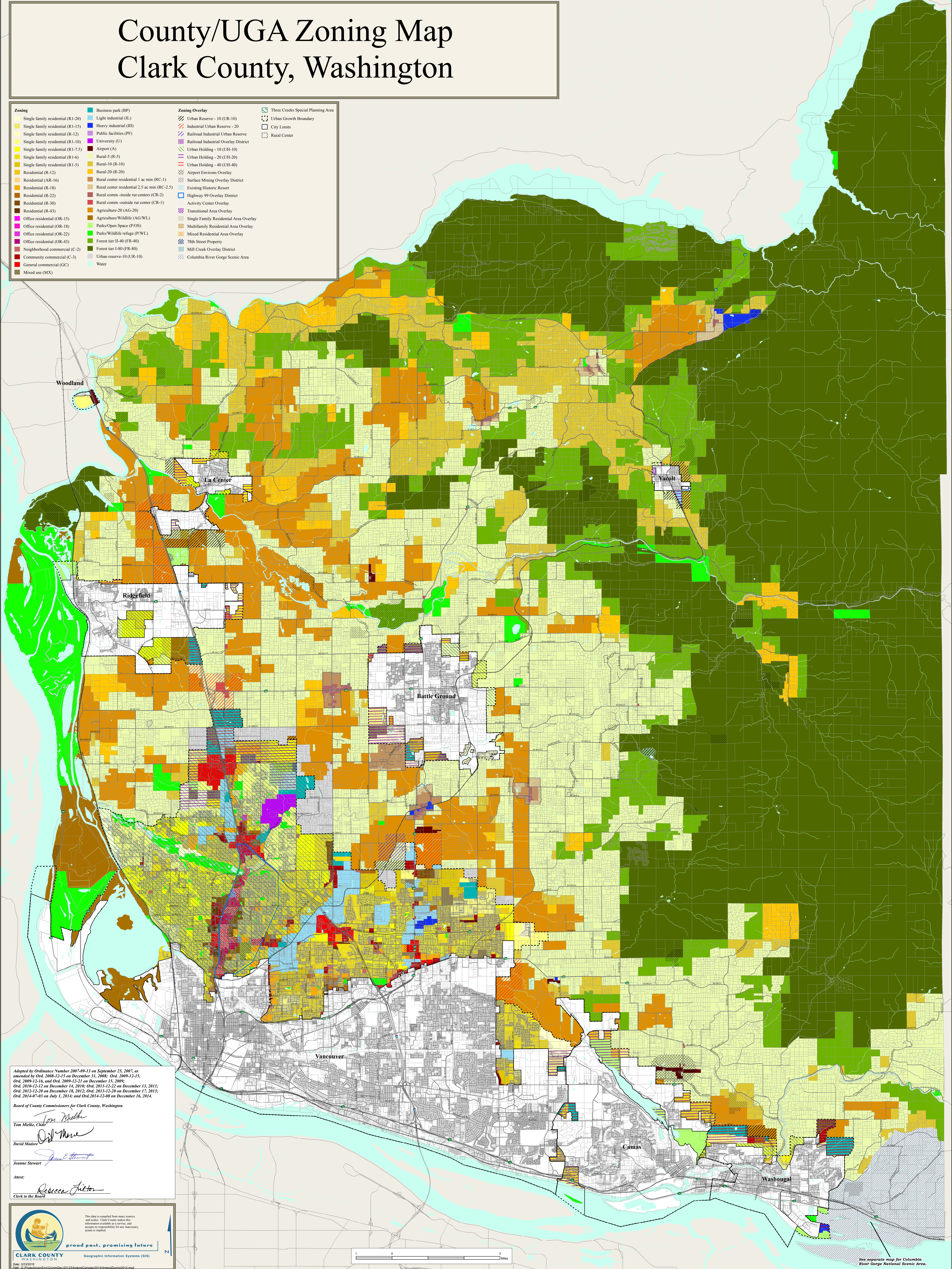


County/UGA Zoning Map Clark County, Washington

Zoning		Zoning Overlay		Other	
Single family residential (R1-20)	Business park (BP)	Urban Reserve - 10 (UR-10)	Three Creeks Special Planning Area	Urban Growth Boundary	
Single family residential (R1-15)	Light industrial (LI)	Industrial Urban Reserve - 20		City Limits	
Single family residential (R1-12)	Heavy industrial (HI)	Railroad Industrial Urban Reserve		Rural Center	
Single family residential (R1-10)	Public facilities (PF)	Railroad Industrial Overlay District			
Single family residential (R1-7.5)	University (U)	Urban Holding - 10 (UH-10)			
Single family residential (R1-5)	Airport (A)	Urban Holding - 20 (UH-20)			
Rural-5 (R-5)	Rural-5 (R-5)	Urban Holding - 40 (UH-40)			
Rural-10 (R-10)	Rural-10 (R-10)	Airport Environs Overlay			
Rural-20 (R-20)	Rural-20 (R-20)	Surface Mining Overlay District			
Rural center residential 1 ac min (RC-1)	Rural center residential 1 ac min (RC-1)	Existing Historic Resort			
Rural center residential 2.5 ac min (RC-2.5)	Rural center residential 2.5 ac min (RC-2.5)	Highway 99 Overlay District			
Rural comm-inside rur centers (CR-2)	Rural comm-inside rur centers (CR-2)	Activity Center Overlay			
Rural comm-outside rur center (CR-1)	Rural comm-outside rur center (CR-1)	Transitional Area Overlay			
Agriculture-20 (AG-20)	Agriculture-20 (AG-20)	Single Family Residential Area Overlay			
Agriculture/Wildlife (AG/WL)	Agriculture/Wildlife (AG/WL)	Multifamily Residential Area Overlay			
Parks/Open Space (POS)	Parks/Open Space (POS)	Mixed Residential Area Overlay			
Green/Wildlife refuge (PWL)	Green/Wildlife refuge (PWL)	7th Street Property			
Forest tier II-40 (FR-40)	Forest tier II-40 (FR-40)	Mill Creek Overlay District			
Forest tier I-80 (FR-80)	Forest tier I-80 (FR-80)	Columbia River Gorge Scenic Area			
Urban reserve-10 (UR-10)	Urban reserve-10 (UR-10)				
Water	Water				
Mixed use (MX)	Mixed use (MX)				



Adopted by Ordinance Number 2007-09-13 on September 25, 2007, as amended by Ord. 2008-12-15 on December 31, 2008; Ord. 2009-12-15, Ord. 2009-12-16, and Ord. 2009-12-21 on December 15, 2009; Ord. 2010-12-12 on December 14, 2010; Ord. 2011-12-22 on December 13, 2011; Ord. 2012-12-20 on December 18, 2012; Ord. 2013-12-20 on December 17, 2013; Ord. 2014-07-03 on July 1, 2014; and Ord. 2014-12-08 on December 16, 2014.

Board of County Commissioners for Clark County, Washington

Tom Mielke, Chair

David Madore

Jeanne Stewart

Attest: Rebecca Fulton, Clerk to the Board

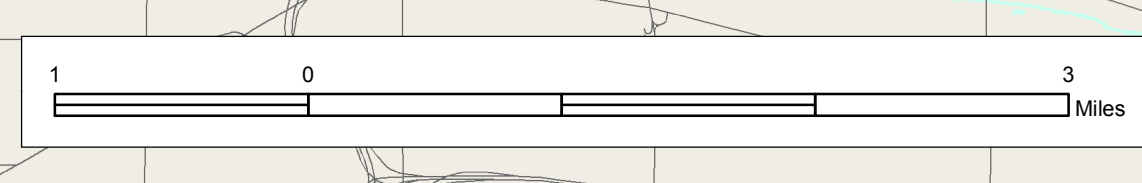
CLARK COUNTY
WASH. STATE GOVT. DIV.

This data is compiled from many sources and scales. Clark County makes this information available as a service, and accepts no responsibility for any inaccuracy, omissions or errors.

Geographic Information Systems (GIS)

Date: 3/3/2015

Path: G:\Projects\GIS\Projects\2015\20150303\20150303_001_County_Zoning_2014.mxd



See separate map for Columbia River Gorge National Scenic Area.